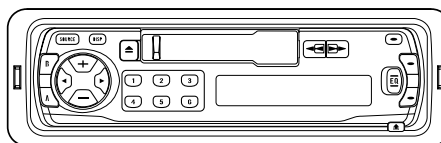


Service Manual

Pioneer

KEH-P1010/XM/UC



ORDER NO
CRT2610

MULTI-CD CONTROL HIGH POWER CASSETTE PLAYER WITH FM/AM TUNER

KEH-P1010

XM/UC

KEH-P1015

XM/ES

CONTENTS

1. SAFETY INFORMATION.....	2	7. GENERAL INFORMATION.....	26
2. EXPLODED VIEWS AND PARTS LIST.....	2	7.1 DIAGNOSIS	26
3. BLOCK DIAGRAM AND SCHEMATIC DIAGRAM....	8	7.1.1 DISASSEMBLY.....	26
4. PCB CONNECTION DIAGRAM.....	14	7.1.2 CONNECTOR FUNCTION DESCRIPTION....	27
5. ELECTRICAL PARTS LIST	21	7.2 PARTS	28
6. ADJUSTMENT.....	25	7.2.1 IC.....	28
		7.2.2 DISPLAY.....	32
		7.3 OPERATIONAL FLOW CHART.....	33
		8. OPERATIONS AND SPECIFICATIONS	34

PIONEER CORPORATION 4-1, Meguro 1-Chome, Meguro-ku, Tokyo 153-8654, Japan
PIONEER ELECTRONICS SERVICE INC. P.O.Box 1760, Long Beach, CA 90801-1760 U.S.A.
PIONEER EUROPE NV Haven 1087 Keetberglaan 1, 9120 Melsele, Belgium
PIONEER ELECTRONICS ASIACENTRE PTE.LTD. 253 Alexandra Road, #04-01, Singapore 159936

© PIONEER CORPORATION 2000

K-ZZS. NOV. 2000 Printed in Japan

1. SAFETY INFORMATION

● KEH-P1010/XM/UC

CAUTION

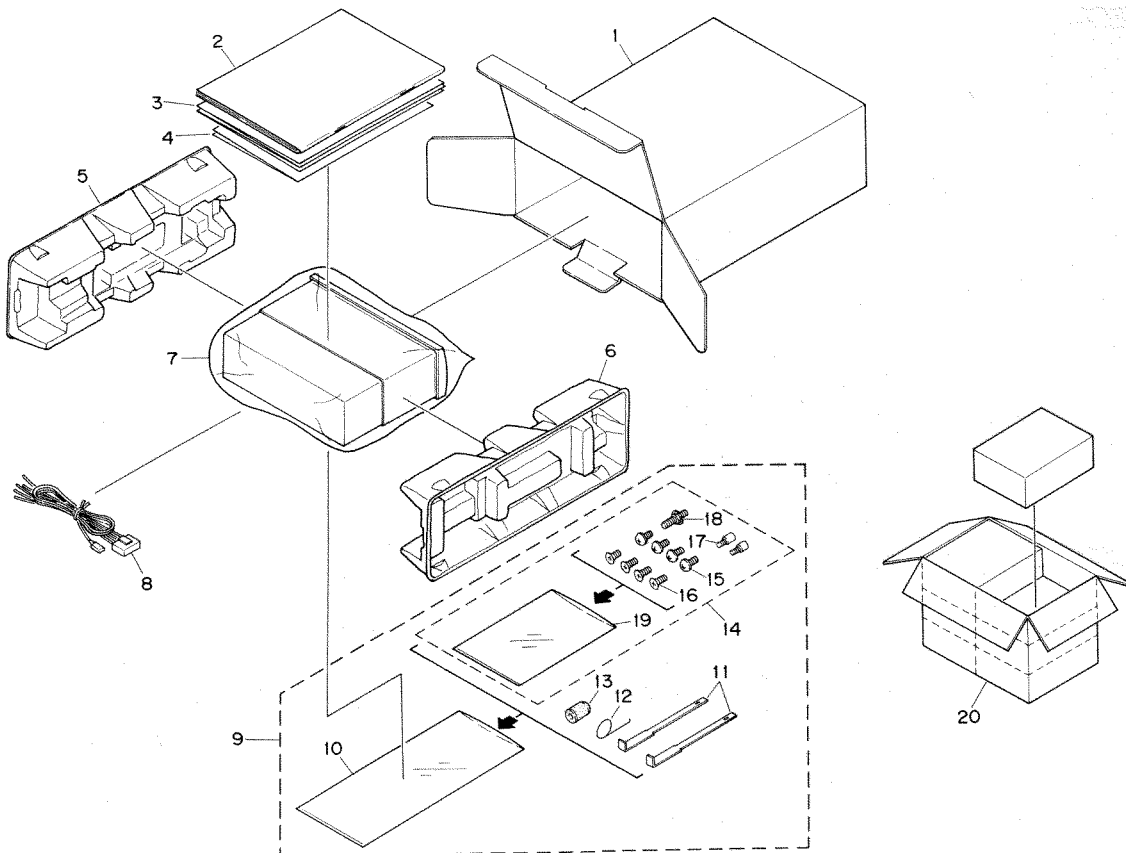
This service manual is intended for qualified service technicians; it is not meant for the casual do-it-yourselfer. Qualified technicians have the necessary test equipment and tools, and have been trained to properly and safely repair complex products such as those covered by this manual. Improperly performed repairs can adversely affect the safety and reliability of the product and may void the warranty. If you are not qualified to perform the repair of this product properly and safely; you should not risk trying to do so and refer the repair to a qualified service technician.

WARNING

This product contains lead in solder and certain electrical parts contain chemicals which are known to the State of California to cause cancer, birth defects or other reproductive harm.
Health & Safety Code Section 25249.6 - Proposition 65

2. EXPLODED VIEWS AND PARTS LIST

2.1 PACKING



NOTE

- Parts marked by “*” are generally unavailable because they are not in our Master Spare Parts List.

● PACKING SECTION PARTS LIST

KEH-P1010/XM/UC

Mark	No.	Description	Part No.	Mark	No.	Description	Part No.
	1	Carton	CZE5573		11	Handle	CNC5395
	2	Owner's Manual	CZR2936		12	Spring	CBH1650
	3	Installation Manual	CZR2937		13	Bush	CNV3930
*	4	Card	ARY1048		14	Screw Assy	CZE2952
	5	Protector	CHP1623		15	Screw	TRZ50P080FMC
	6	Protector	CHP1622		16	Screw	CRZ50P080FMC
	7	Polyethylene Bag	CEG1173		17	Screw(M2x4)	CBA1488
	8	Cord Assy	CZD2976		18	Screw	CBA1002
	9	Accessory Assy	CZE2954	*	19	Polyethylene Bag	CEG-127
*	10	Polyethylene Bag	CZE2908		20	Contain Box	CZH5574

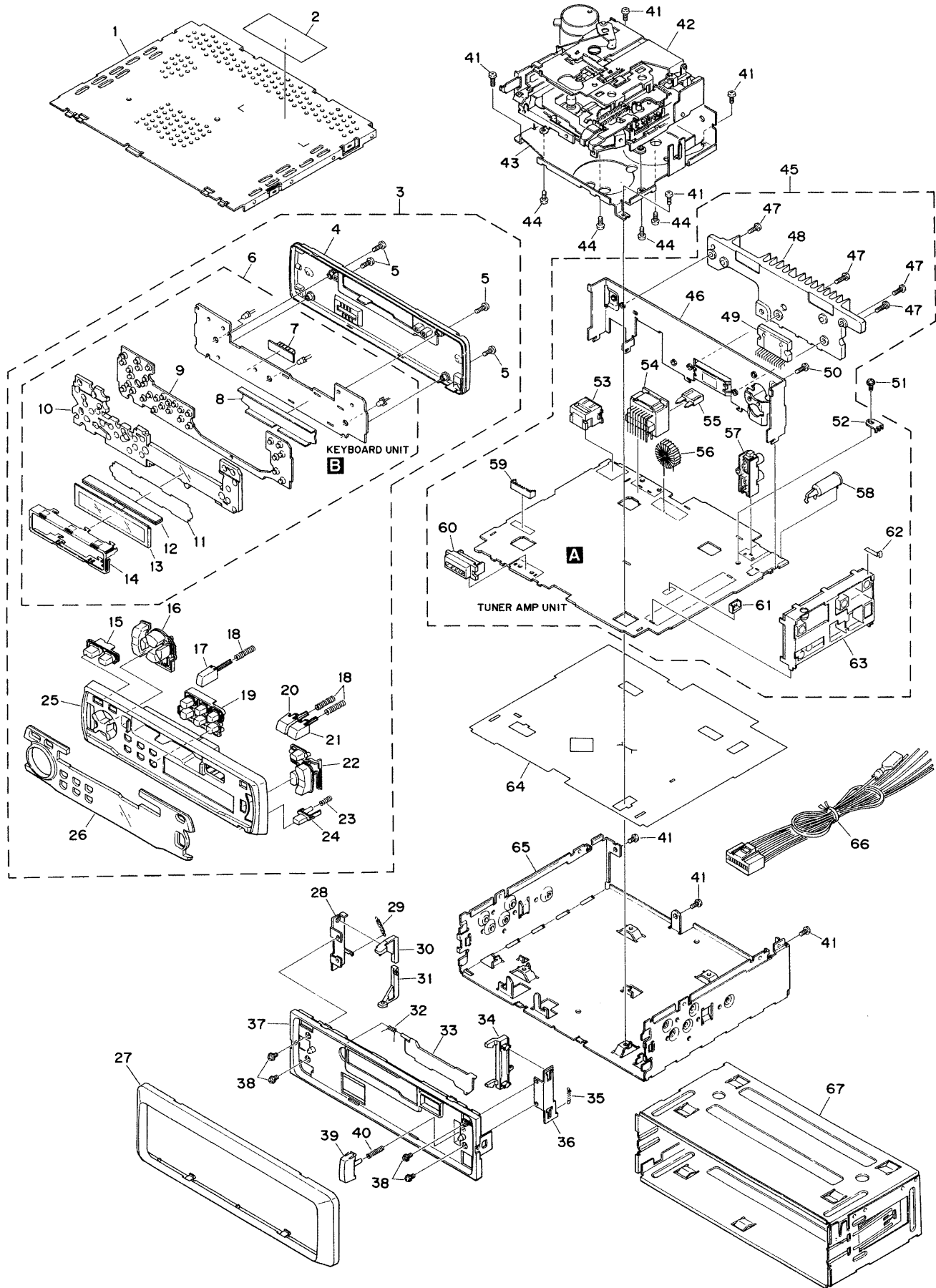
KEH-P1015/XM/ES

Mark	No.	Description	Part No.	Mark	No.	Description	Part No.
	1	Carton	CZH5575		11	Handle	CNC5395
	2	Owner's Manual	CZR2938		12	Spring	CBH1650
	3	Installation Manual	CZR2939		13	Bush	CNV3930
	4	●●●●			14	Screw Assy	CZE2953
	5	Protector	CHP1623		15	Screw	TRZ50P080FMC
	6	Protector	CHP1622		16	Screw	CRZ50P080FMC
	7	Polyethylene Bag	CZE2903		17	●●●●	
	8	Cord Assy	CZD2976		18	Screw	CBA1002
	9	Accessory Assy	CZE2955	*	19	Polyethylene Bag	CEG-127
*	10	Polyethylene Bag	CZE2908		20	Contain Box	CZH5574

Owner's Manual,Installation Manual

Part No.	Language
CZR2936	English, French, Spanish
CZR2937	English, French, Spanish
CZR2938	English, Spanish, Portuguese, China, Arabic
CZR2939	English, Spanish, Portuguese, China, Arabic

2.2 EXTERIOR



(1)EXTERIOR SECTION PARTS LIST

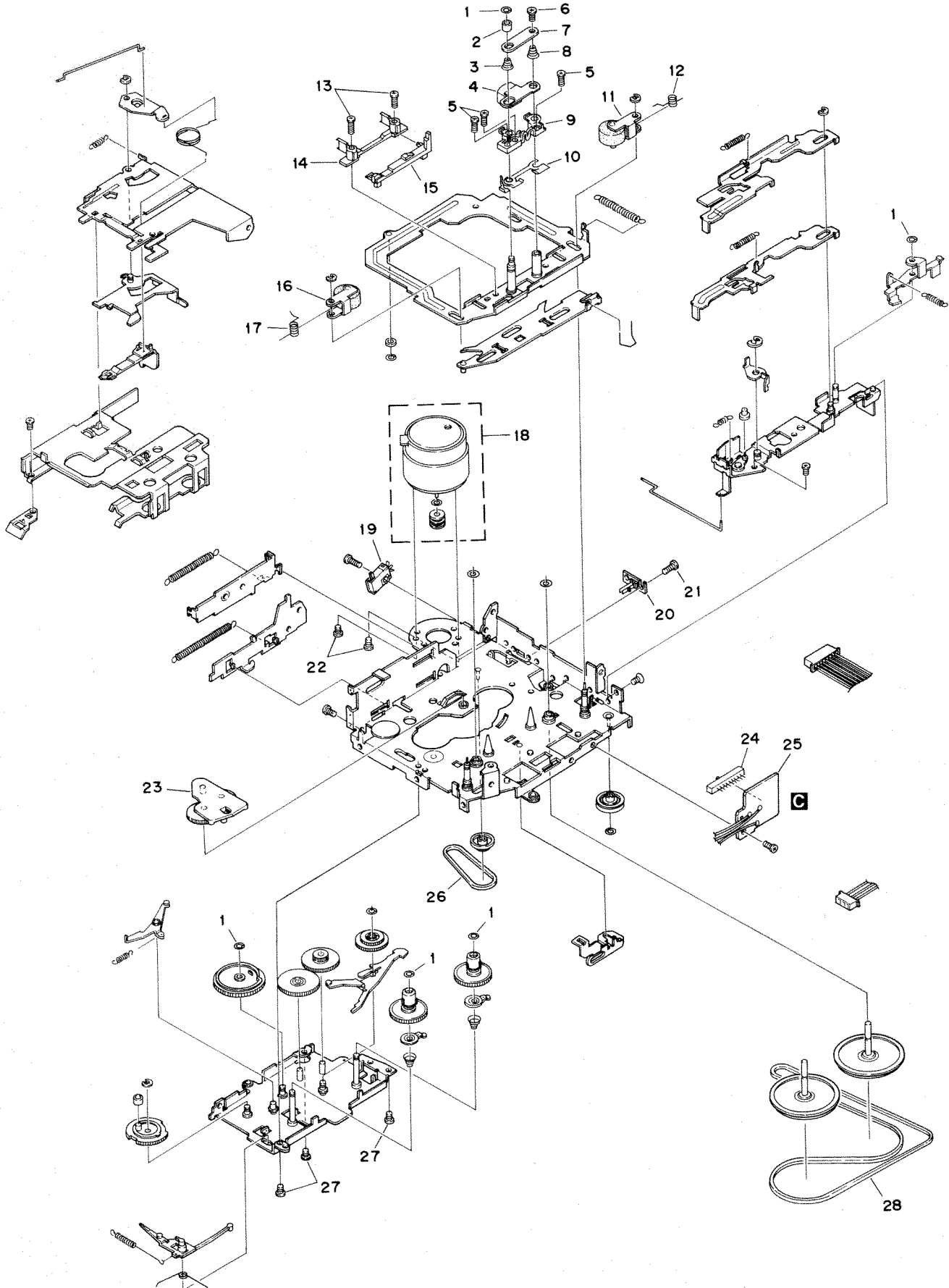
Mark	No.	Description	Part No.	Mark	No.	Description	Part No.
	1	Case	CZN6739		36	Bracket	CNC6791
*	2	Label	CZA5543		37	Panel	CZN6755
	3	Grille Unit	See Contrast table(2)		38	Screw	IMS20P030FZK
	4	Cover	CZN6753		39	Button	CAC4836
	5	Screw	BPZ20P100FZK		40	Spring	CBH1996
	6	Keyboard Unit	CZW5520		41	Screw	BSZ26P060FMC
	7	Connector(CN900)	CKS3580		42	Mechanism	CZX5514
	8	Holder	CZN6759		43	Bracket	CZN6738
	9	Rubber	CZN6744		44	Screw	BMZ26P040FMC
	10	Lighting Conductor	CZN6758		45	Tuner Amp Unit	See Contrast table(2)
	11	Sheet	CZN6760	*	46	Panel	CZN6741
	12	Connector	CZN6745		47	Screw	BSZ26P100FMC
	13	LCD(LCD900)	CZA5540	*	48	Heat Sink	CZN6740
	14	Holder	CZN6743		49	IC(IC500)	TA8277H
	15	Button(SOURCE)	CZA5535		50	Screw	BPZ26P100FZK
	16	Button(CROSS)	CZA5532		51	Screw	ISS26P055FUC
	17	Button(EJECT)	CZA5531		52	Terminal(CN101)	CKF1059
	18	Spring	CZB2976		53	Connector(CN600)	CKS3408
	19	Button(1-6)	CZA5533		54	Connector(CN200)	CZK2943
	20	Button(REW)	CZA5530		55	Fuse(10A)	CEK1208
	21	Button(FF)	CZA5529		56	Choke Coil(L700)	CTH1221
	22	Button(EQ)	CZA5534		57	Pin Jack(CN700)	CKB1041
	23	Spring	CZB2977		58	Antenna Jack(CN100)	CKX1056
	24	Button	CAC5789		59	Plag(CN300)	CZK2946
	25	Grille	CZN6746		60	Connector(CN800)	CKS3581
	26	Plate Assy	See Contrast table(2)		61	Plug(CN350)	CZK2945
	27	Panel	CNS6344		62	Plate	CZN6730
	28	Bracket	CNC6135		63	FM/AM Tuner Unit	CZW5523
	29	Spring	CBH1834		64	Insulator	CZN6742
	30	Arm	CNV4692		65	Chassis	CZN6735
	31	Arm	CNV4693		66	Cord Assy	CZD2976
	32	Spring	CBH2126		67	Holder Unit	CXB6681
	33	Door	CAT2109				
	34	Arm	CNV4728				
	35	Spring	CBH1835				

(2)CONTRAST TABLE

KEH-P1010/XM/UC and KEH-P1015/XM/ES have the same cuntruction except for the following:

Mark No.	Symbol and Description	Part No.	
		KEH-P1010/XM/UC	KEH-P1015/XM/ES
3	Grille Unit	CZ X 5 5 1 0	C Z X 5 5 1 1
26	Plate Assy	C Z X 5 5 0 5	C Z X 5 5 0 6
45	Tuner Amp Unit	C Z W 5 5 1 7	C Z W 5 5 1 8

2.3 CASSETTE MECHANISM



NOTE

- For the cassette mechanism, only the parts listed here are available as spare parts. The others (not shown in the list) cannot be supplied.

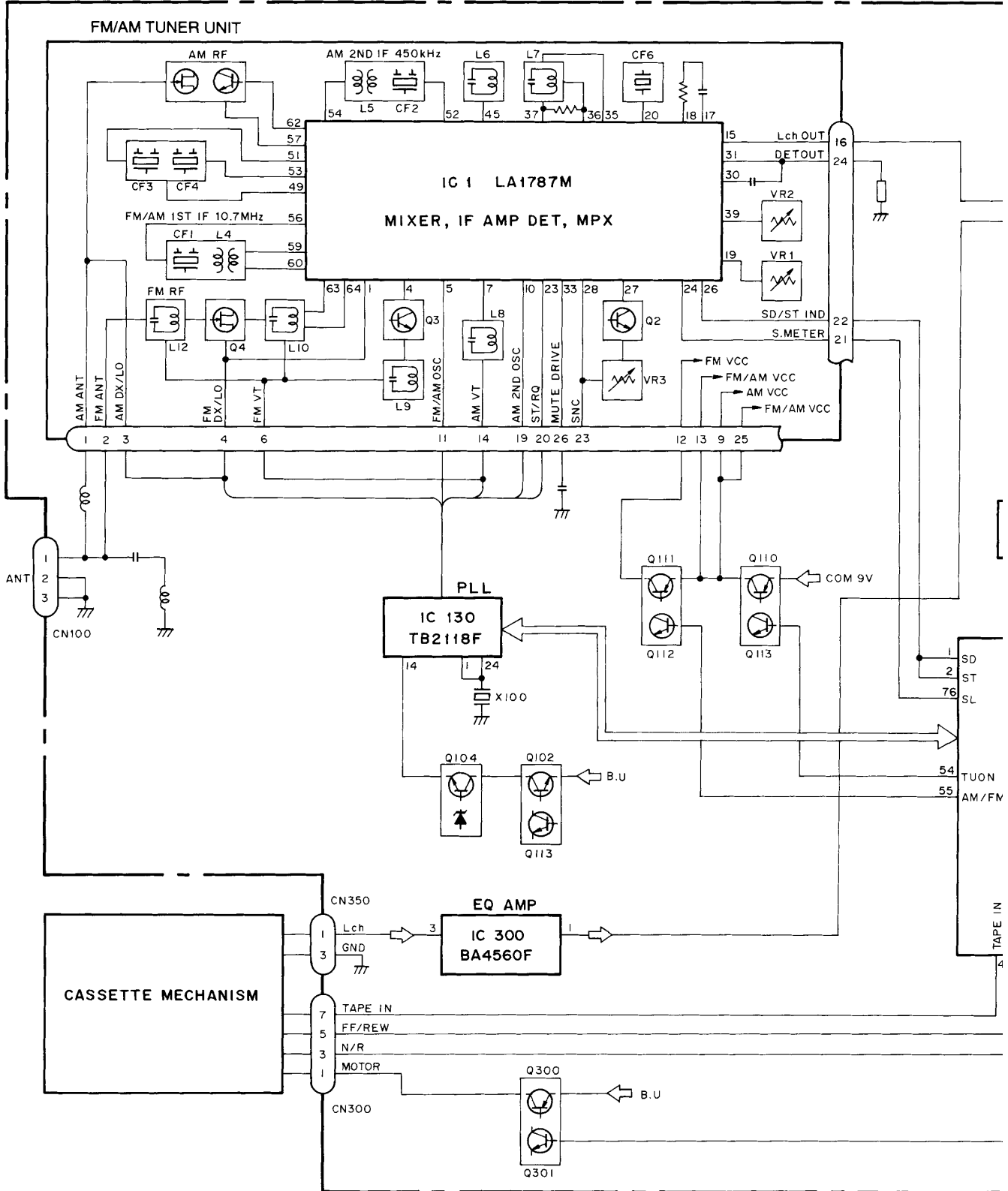
● CASSETTE MECHANISM SECTION PARTS LIST

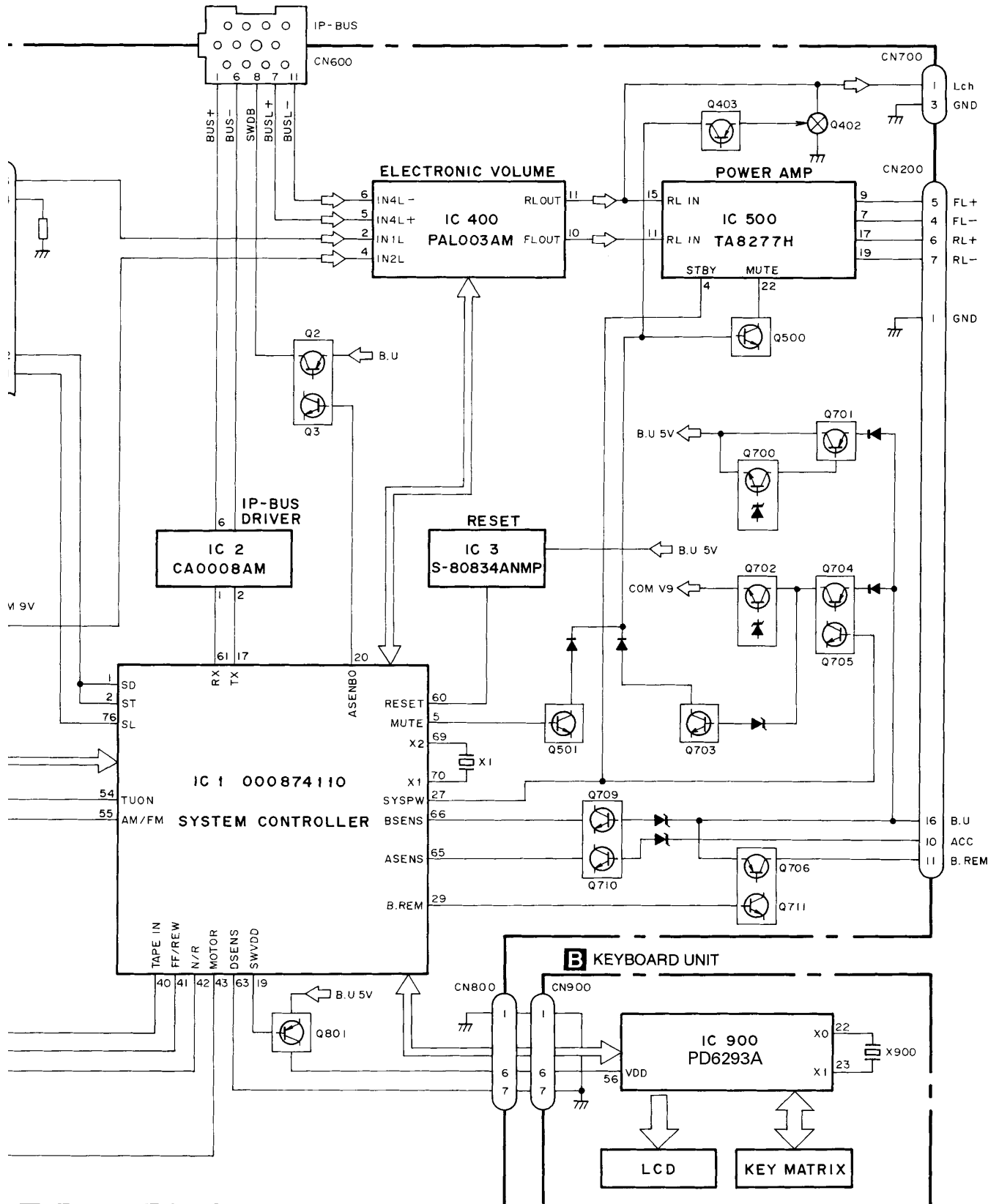
Mark	No.	Description	Part No.
	1	Washer	1-0036-5024
	2	Roller	1-0363-3018
	3	Spring	1-0036-4011
	4	Head	1-0036-7123
	5	Screw	1-0138-5002
	6	Screw	2-1012-0040-C2
	7	Plate	1-0036-1015
	8	Spring	1-0036-4010
	9	Arm	10138-2005-3
	10	Shim	1-0138-1006
	11	Pinch Arm (F) Assy	1-0036-6014
	12	Spring	1-0363-4003
	13	Screw	2-1032-0070-C2
	14	Tape Guide	1-0038-2018
	15	Link	1-0363-2006
	16	Pinch Arm (R) Assy	1-0036-6013
	17	Spring	1-0363-4004
	18	Motor Assy (M1)	X-0363-7006
	19	Power Switch (S1)	1-0363-7005
	20	Mute Switch (S2)	1-0363-7001
	21	Screw	213317040-C2
	22	Screw	2-1032-0025-C2
	23	Arm Assy	X-0363-6003
	24	Slide Switch (S3)	1-0363-7002
	25	SW PWB	1-0363-7008
	26	Belt	1-0036-5018
	27	Screw	213820030-C2
	28	Belt	1-0036-5004

3. BLOCK DIAGRAM AND SCHEMATIC DIAGRAM

3.1 BLOCK DIAGRAM

A TUNER AMP UNIT



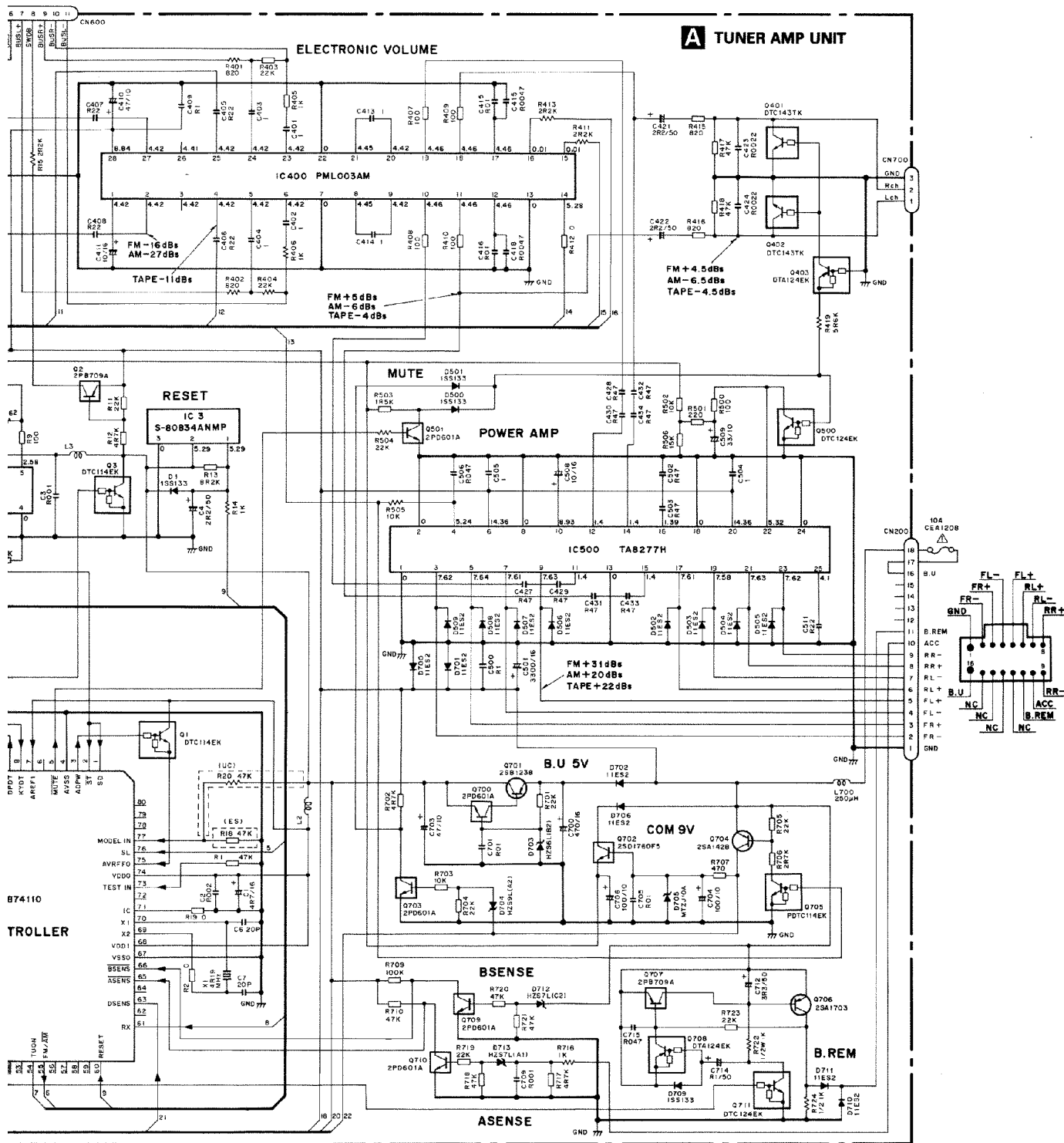


A

B

C

D



NOTE:

- Symbol indicates a resistor. No differentiation is made between chip resistors and discrete resistors.
- ⊖ Symbol indicates a capacitor. No differentiation is made between chip capacitors and discrete capacitors.

Decimal points for resistor and capacitor fixed values are expressed as:
 2.2 → R22
 0.022 → R022

The Δ mark found on some component parts indicates the importance of the safety factor of the part. Therefore, when replacing, be sure to use parts of identical designation.

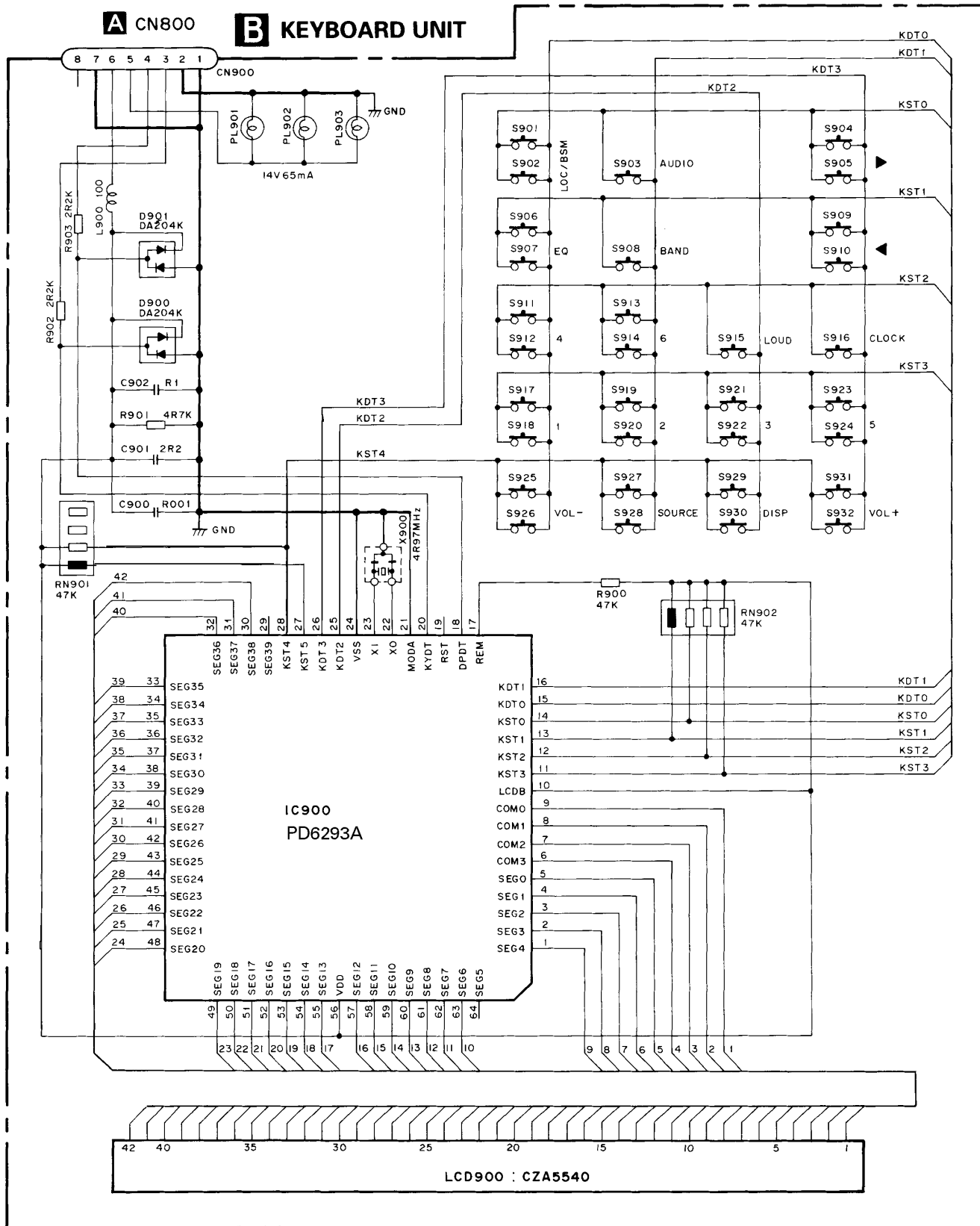


3.3 KEYBOARD UNIT

A

A CN800

B KEYBOARD UNIT

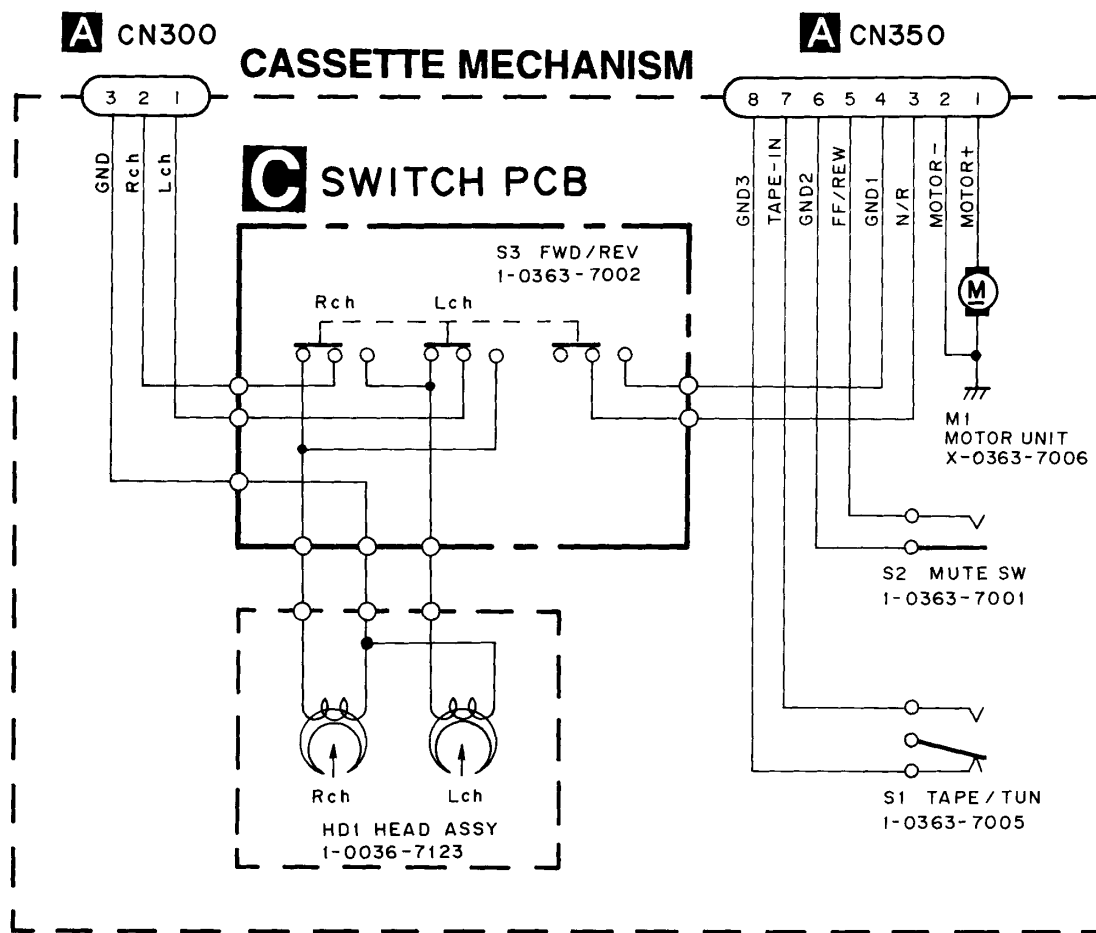


B

C

D

3.4 CASSETTE MECHANISM



- SWITCHES :
- S1 : TAPE/TUN SWITCH.....TAPE/TUN
 - S2 : MUTE SWITCHON-OFF
 - S3 : FWD/REV SWITCH.....FWD-REV

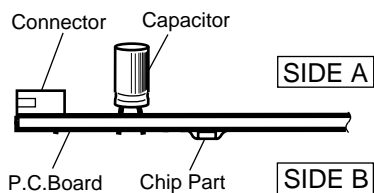
The underlined indicates the switch position.

4. PCB CONNECTION DIAGRAM

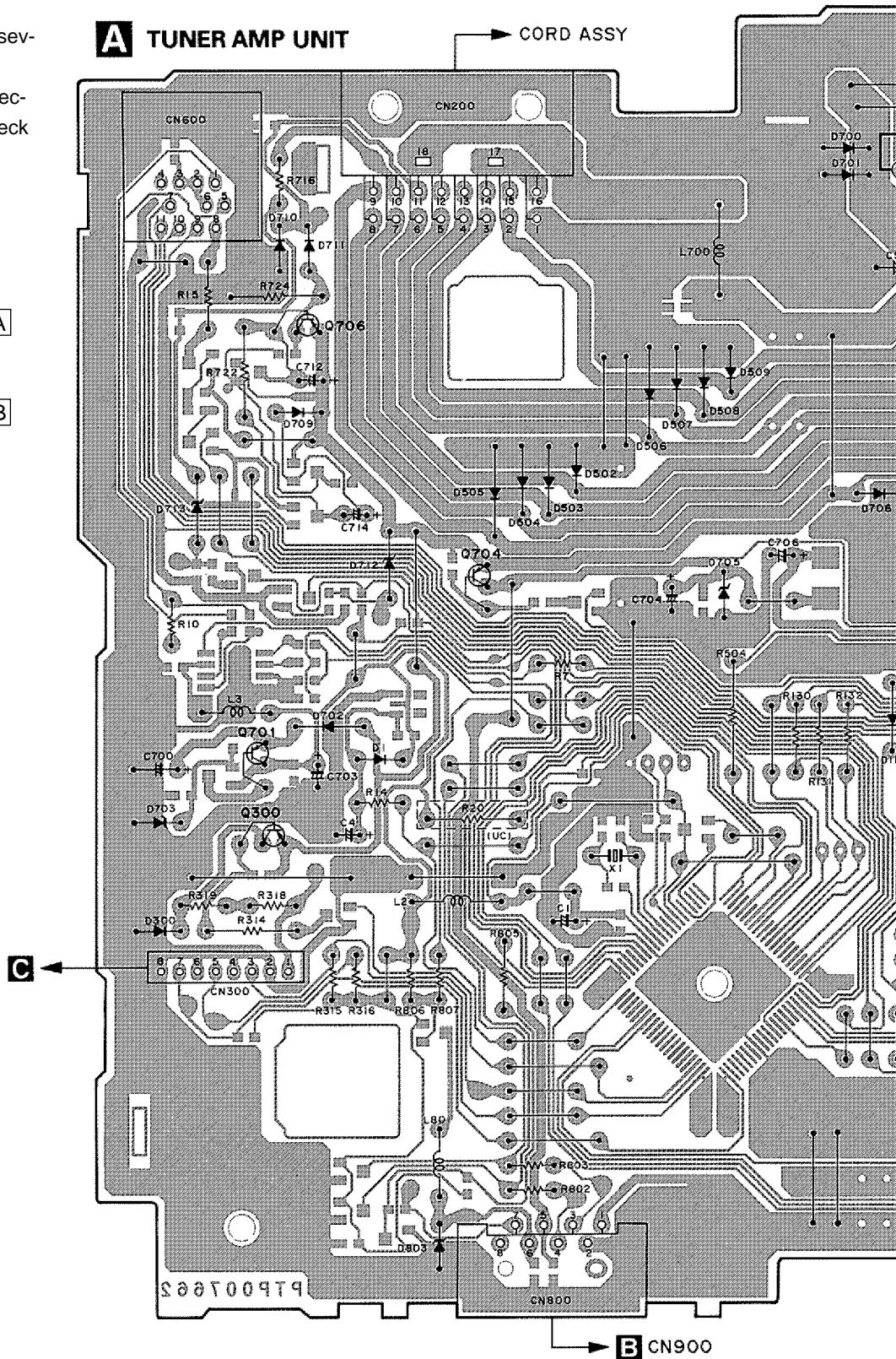
4.1 TUNER AMP UNIT

NOTE FOR PCB DIAGRAMS

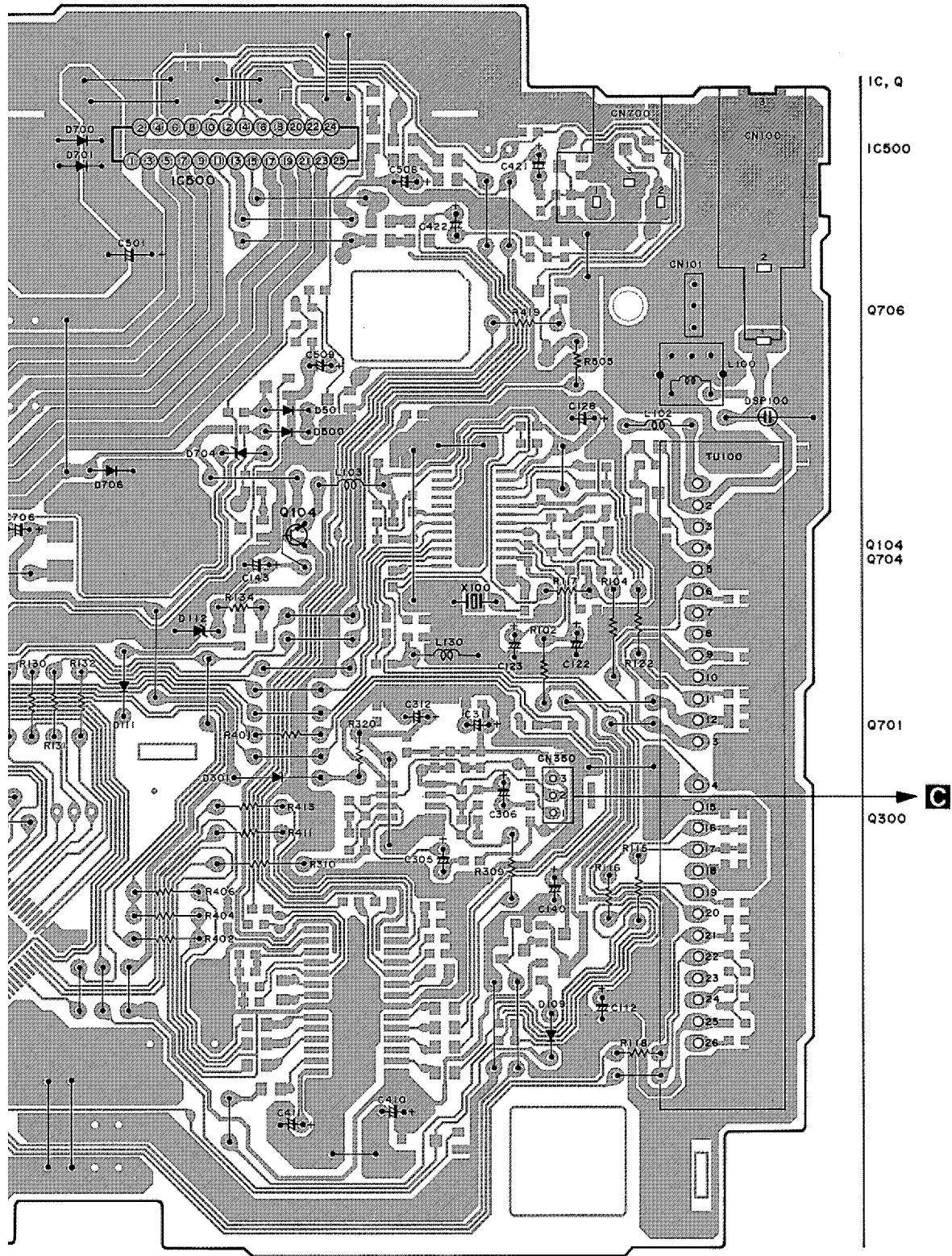
- The parts mounted on this PCB include all necessary parts for several destination. For further information for respective destinations, be sure to check with the schematic diagram.
- Viewpoint of PCB diagrams



A TUNER AMP UNIT



SIDE A



FRONT

A TUNER AMP UNIT

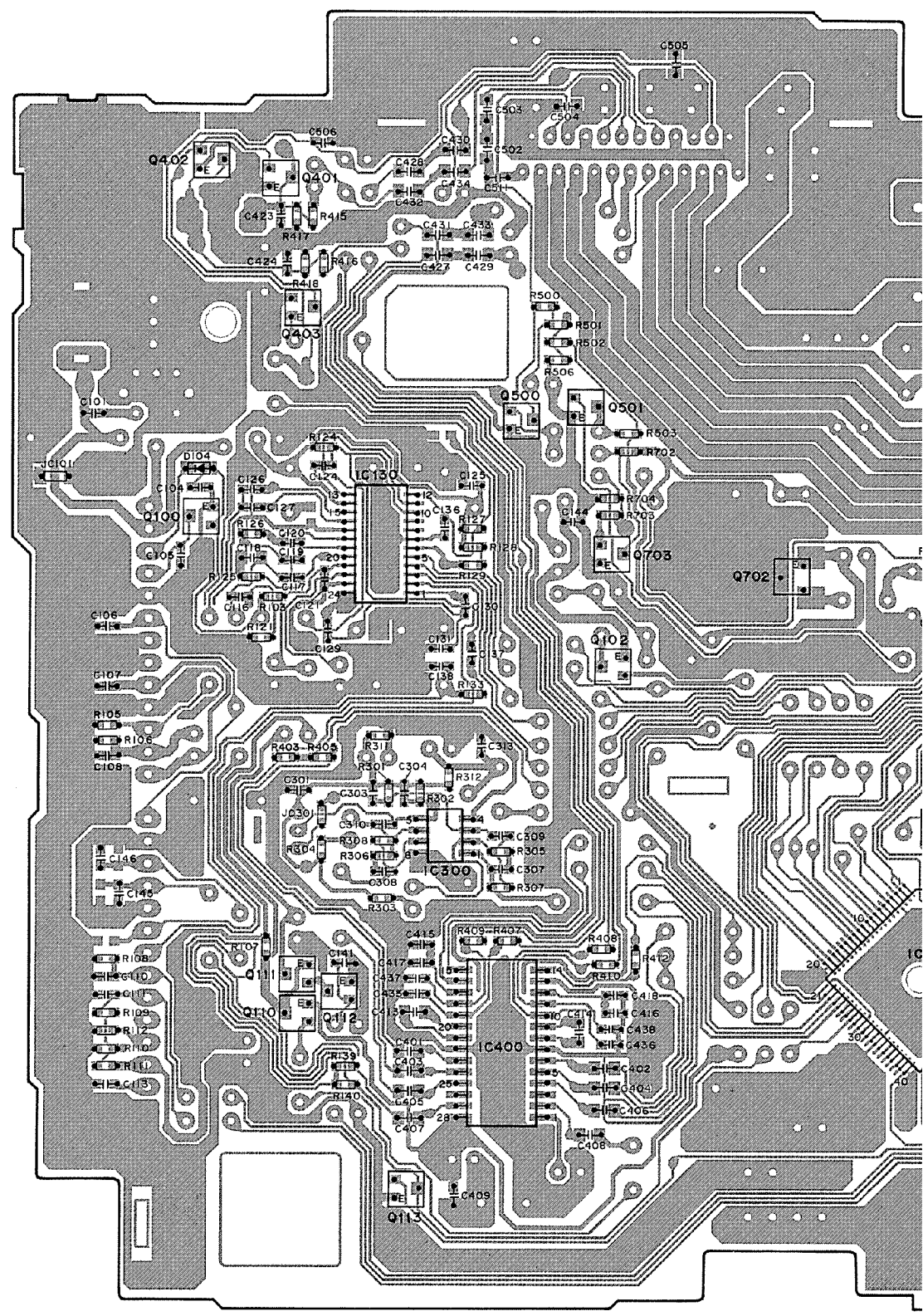
A

B

C

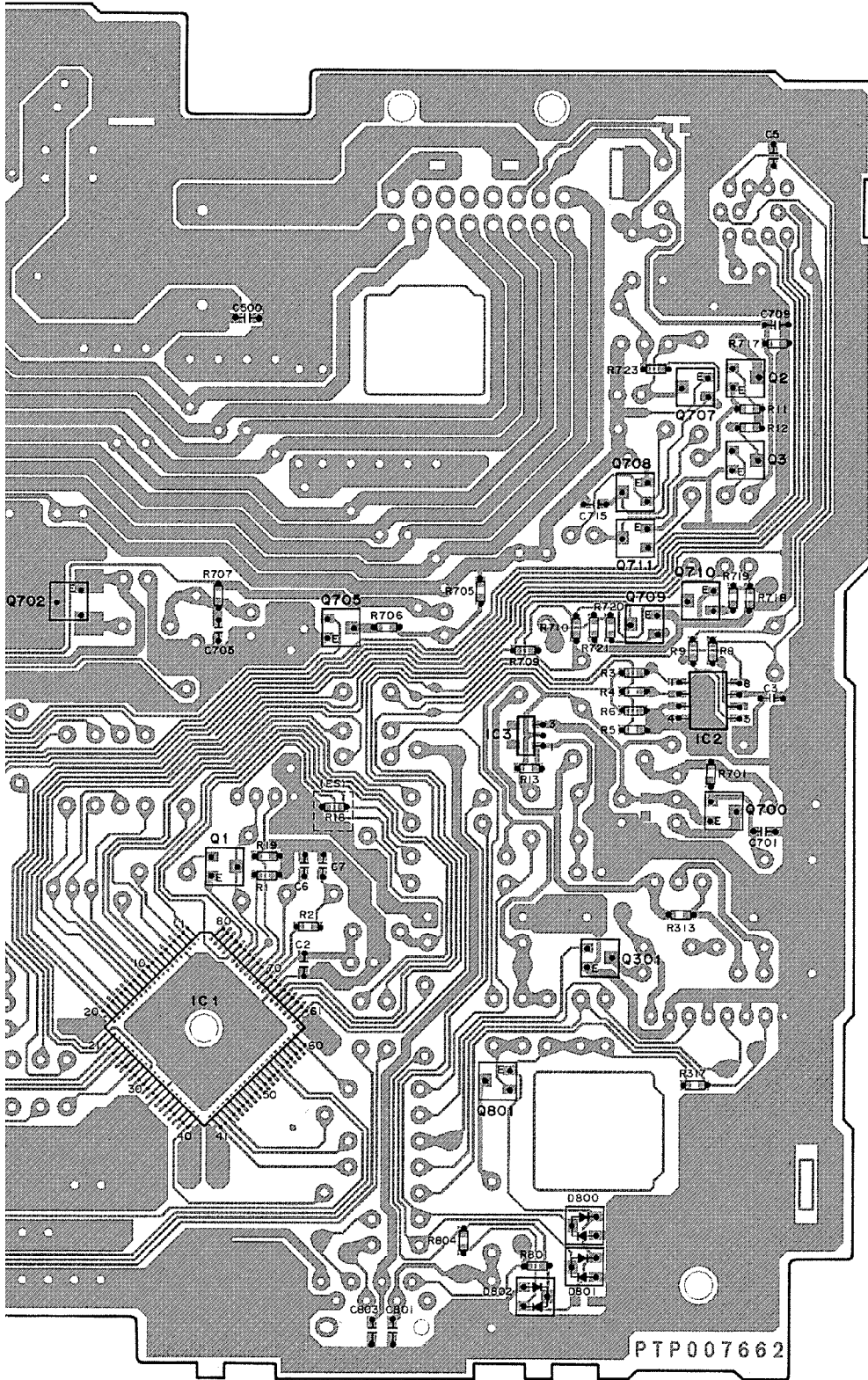
D

- IC, Q
- Q402
- Q401
- Q403
- Q707, Q2
- Q3
- Q500, Q501
- Q711, Q708
- Q100
- IC130
- Q709, Q710
- Q703, Q702
- Q705
- Q102
- IC3, IC2
- Q700
- Q1
- IC300
- Q301
- IC1, Q801
- Q111, Q112
- Q110
- IC400
- Q113



FRONT

SIDE B



A

B

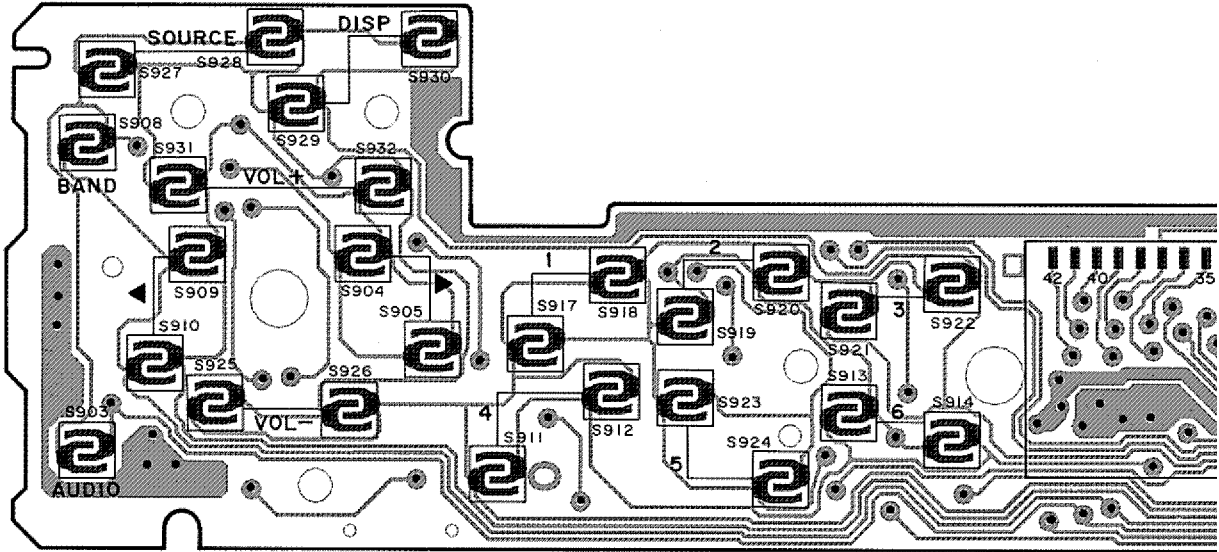
C

D

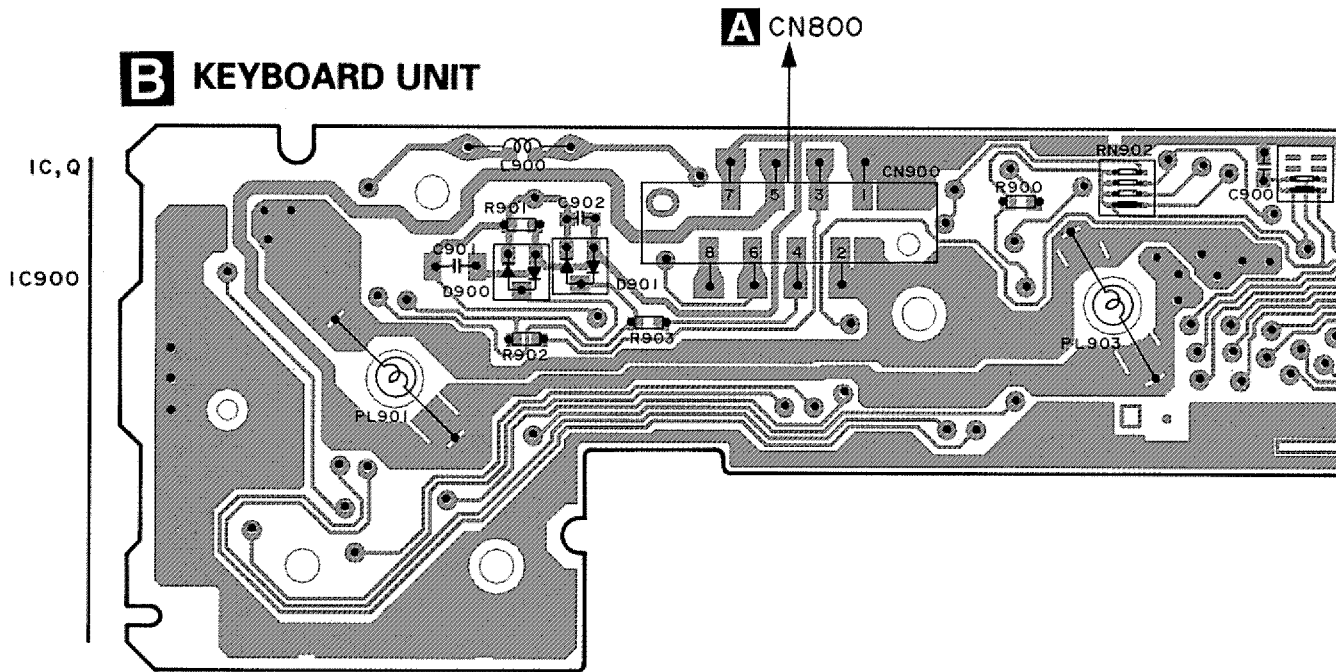


4.2 KEYBOARD UNIT

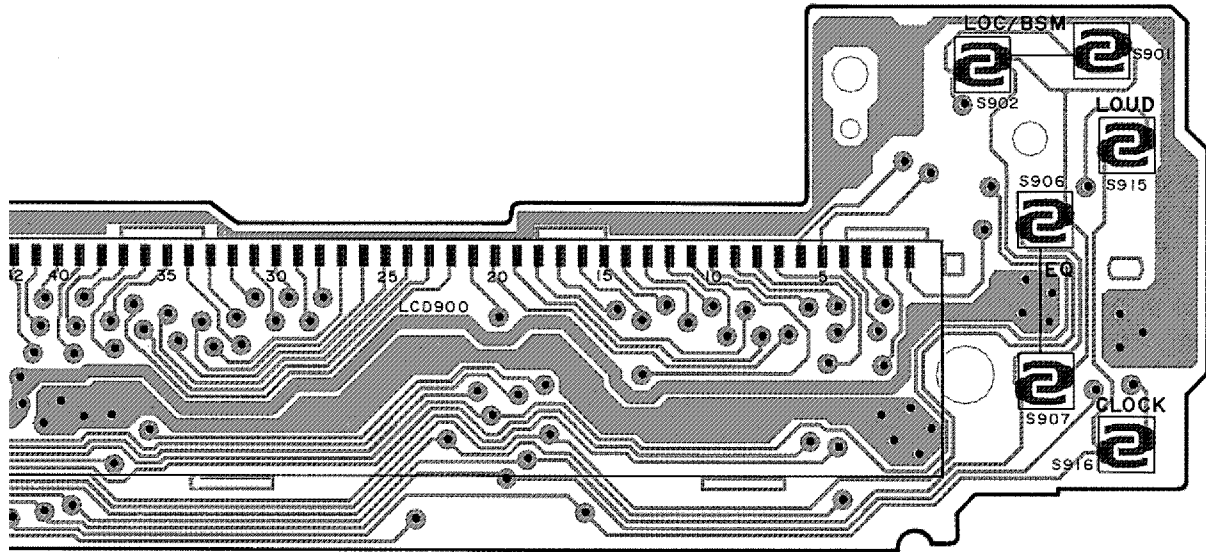
B KEYBOARD UNIT



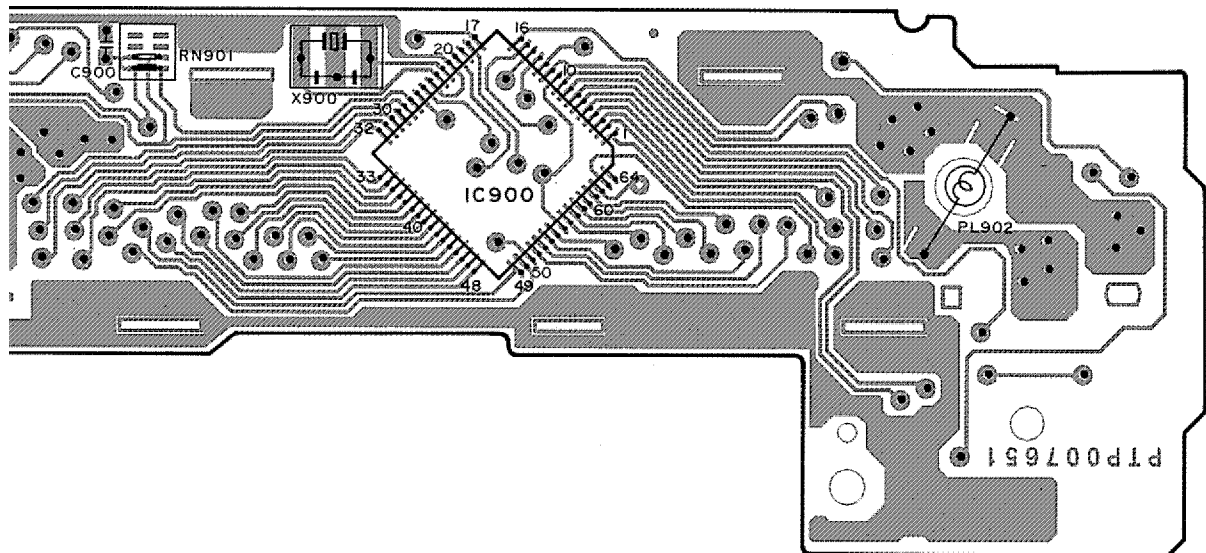
B KEYBOARD UNIT



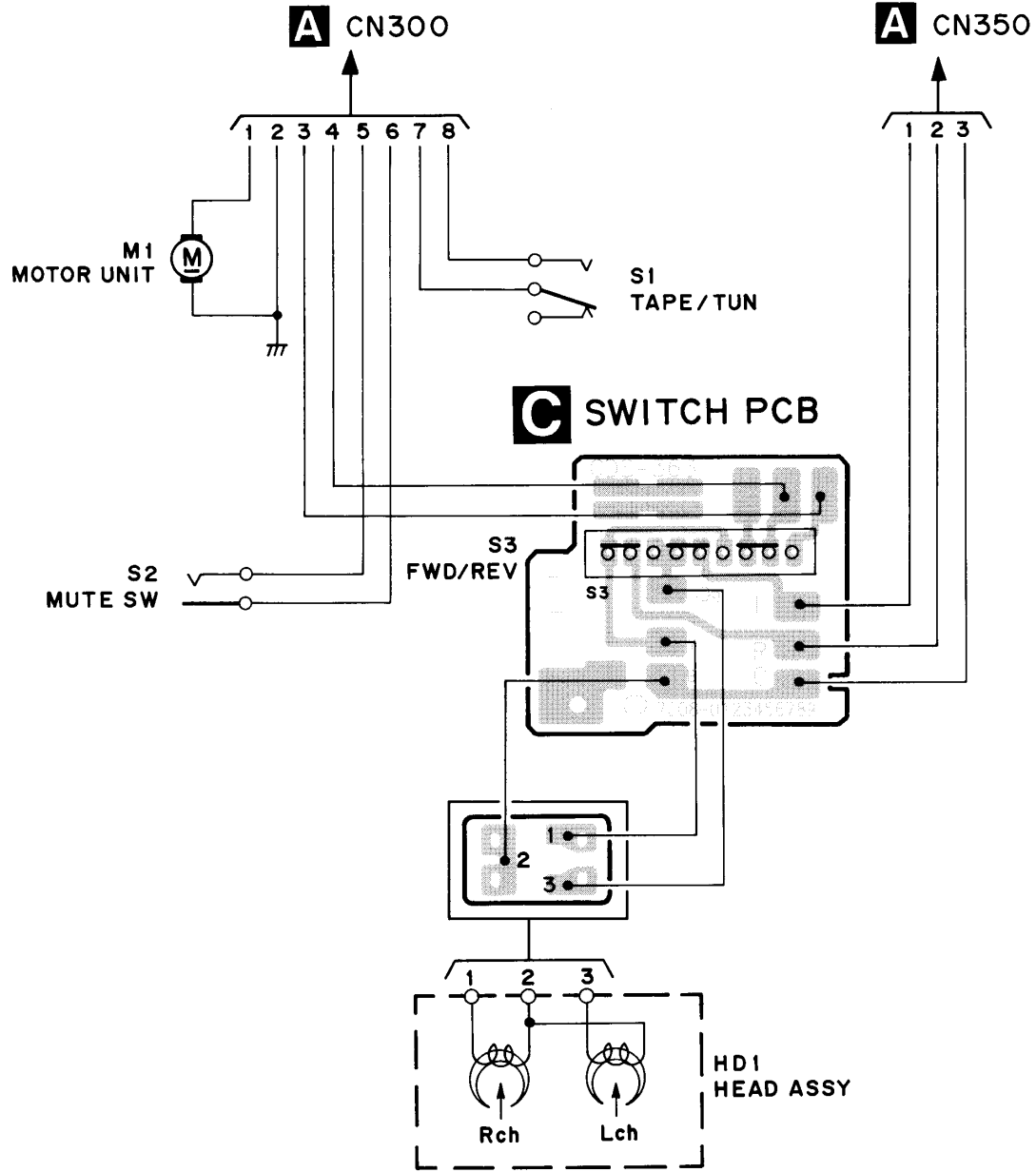
SIDE A



SIDE B



4.3 CASSETTE MECHANISM



5. ELECTRICAL PARTS LIST

NOTES:

- Parts whose parts numbers are omitted are subject to being not supplied.
- The part numbers shown below indicate chip components.

Chip Resistor

RS1/○S○○○○J,RS1/○○S○○○J

Chip Capacitor (except for CQS.....)

CKS....., CCS....., CSZS.....

====Circuit Symbol and No.====Part Name	Part No.	====Circuit Symbol and No.====Part Name	Part No.
A Unit Number :CZW5517(KEH-P1010/XM/UC)		Q 711 Transistor	DTC124EK
Unit Name :Tuner Amp Unit		Q 801 Transistor	2PB709A
		D 1 Diode	1SS133
		D 104 Diode	1SS355
		D 109 Diode	1SS133
		D 111 Diode	1SS133
		D 112 Diode	MTZJ5R6(B)
		D 300 Diode	11ES2
		D 301 Diode	1SS133
		D 500 Diode	1SS133
		D 501 Diode	1SS133
		D 502 Diode	11ES2
		D 503 Diode	11ES2
		D 504 Diode	11ES2
		D 505 Diode	11ES2
		D 506 Diode	11ES2
		D 507 Diode	11ES2
		D 508 Diode	11ES2
		D 509 Diode	11ES2
		D 700 Diode	11ES2
		D 701 Diode	11ES2
		D 702 Diode	11ES2
		D 703 Diode	HZS6L(B2)
		D 704 Diode	HZS9L(A2)
		D 705 Diode	MTZJ10(A)
		D 706 Diode	11ES2
		D 709 Diode	1SS133
		D 710 Diode	11ES2
		D 711 Diode	11ES2
		D 712 Diode	HZS7L(C2)
		D 713 Diode	HZS7L(A1)
		D 800 Diode	DA204K
		D 801 Diode	DA204K
		D 802 Diode	DA204K
		D 803 Diode	MTZJ6R8(B)
IC 1 IC	000874110		
IC 2 IC	CA0008AM		
IC 3 IC	S-80834ANMP		
IC 130 IC	TB2118F		
IC 300 IC	BA4560F		
IC 400 IC	PML003AM		
IC 500 IC	TA8277H		
Q 1 Transistor	DTC114EK		
Q 2 Transistor	2PB709A		
Q 3 Transistor	DTC114EK		
Q 100 Transistor	DTC124EK		
Q 102 Transistor	DTA114YKA		
Q 104 Transistor	2SC3668		
Q 110 Transistor	DTB113ZK		
Q 111 Transistor	DTA114YKA		
Q 112 Transistor	DTC124EK		
Q 113 Transistor	DTC124EK		
Q 300 Transistor	2SB1238		
Q 301 Transistor	DTC114EK		
Q 401 Transistor	DTC143TK		
Q 402 Transistor	DTC143TK		
Q 403 Transistor	DTA124EK		
Q 500 Transistor	DTC124EK		
Q 501 Transistor	2PD601A		
Q 700 Transistor	2PD601A		
Q 701 Transistor	2SB1238		
Q 702 Transistor	2SD1760F5		
Q 703 Transistor	2PD601A		
Q 704 Transistor	2SA1428		
Q 705 Transistor	DTC114EK		
Q 706 Transistor	2SA1703		
Q 707 Transistor	2PB709A		
Q 708 Transistor	DTA124EK		
Q 709 Transistor	2PD601A		
Q 710 Transistor	2PD601A		

KEH-P1010,P1015

====Circuit Symbol and No.====Part Name	Part No.	====Circuit Symbol and No.====Part Name	Part No.
L 2 Ferri-Inductor	LAU2R2K	R 125	RS1/16S153J
L 3 Ferri-Inductor	LAU2R2K	R 126	RS1/16S123J
L 100 Coil	CZT2930	R 127	RS1/16S682J
L 102 Ferri-Inductor	LAU330K	R 128	RS1/16S103J
L 103 Inductor	LAU100K	R 129	RS1/16S102J
L 130 Inductor	LAUR47K	R 130	RD1/4PU102J
L 700 Choke Coil 250μH	CTH1221	R 131	RD1/4PU102J
L 801 Inductor	LAU100K	R 132	RD1/4PU10
X 1 Crystal Resonator 4.194304MHz	CZS2918	R 133	RS1/16S102J
X 100 Crystal Resonator 10.250MHz	CSS1432	R 134	RD1/4PU471J
DSP100 Surge Protector	DSP-200-A11F	R 139	RS1/16S182J
TU 100 FM/AM Tuner Unit	CZW5523	R 140	RS1/16S182J
JC 101	RS1/8S0R0J	R 301	RS1/16S473J
JC 301	RS1/16S0R0J	R 302	RS1/16S473J
		R 303	RS1/16S330J
RESISTORS		R 304	RS1/16S330J
R 1	RS1/16S473J	R 305	RS1/16S153J
R 3	RS1/16S102J	R 306	RS1/16S153J
R 4	RS1/16S102J	R 307	RS1/16S564J
R 5	RS1/16S473J	R 308	RS1/16S564J
R 6	RS1/16S473J	R 309	RD1/4PU102J
R 7	RD1/4PU102J	R 310	RD1/4PU102J
R 8	RS1/16S101J	R 311	RS1/16S103J
R 9	RS1/16S101J	R 312	RS1/16S103J
R 10	RD1/4PU620J	R 313	RS1/16S103J
R 11	RS1/16S223J	R 314	RD1/2PM102J
R 12	RS1/16S472J	R 315	RD1/4PU104J
R 13	RS1/16S822J	R 316	RD1/4PU104J
R 14	RD1/4PU102J	R 317	RS1/16S104J
R 15	RD1/4PU222J	R 318	RD1/4PU1R5J
R 18	See Contrast table	R 319	RD1/4PU1R5J
R 19	RS1/16S0R0J	R 320	RD1/4PU330J
R 20	See Contrast table	R 401	RD1/4PU821J
R 21	RS1/16S0R0J	R 402	RD1/4PU821J
R 103	RS1/16S103J	R 403	RS1/16S223J
R 104	RD1/4PU102J	R 404	RD1/4PU223J
R 105	RS1/16S102J	R 405	RS1/16S102J
R 106	RS1/16S102J	R 406	RD1/4PU102J
R 107	RS1/16S2R2J	R 407	RS1/16S101J
R 108	RS1/16S473J	R 408	RS1/16S101J
R 109	RS1/16S223J	R 409	RS1/16S101J
R 110	RS1/16S222J	R 410	RS1/16S101J
R 111	RS1/16S152J	R 411	RD1/4PU222J
R 112	RS1/16S223J	R 412	RS1/16S0R0J
R 115	RD1/4PU102J	R 413	RD1/4PU222J
R 116	RD1/4PU102J	R 415	RS1/16S821J
R 117	RD1/4PU471J	R 416	RS1/16S821J
R 118	RD1/4PU223J	R 417	RS1/16S473J
R 121	RS1/16S101J	R 418	RS1/16S473J
R 122	RD1/4PU151J	R 419	RD1/4PU562J
R 124	RS1/16S473J		

====Circuit Symbol and No.====Part Name	Part No.	====Circuit Symbol and No.====Part Name	Part No.
R 500	RS1/16S101J	C 112	CEAL221M10
R 501	RS1/16S221J	C 113	CKSRYB104K25
R 502	RS1/16S103J	C 116	CKSRYB103K50
R 503	RS1/16S152J	C 117	CKSRYB473K25
R 504	RD1/4PU223J	C 118	CKSRYB105K10
R 505	RD1/4PU103J	C 119	CKSRYB473K25
R 506	RS1/16S153J	C 120	CKSRYB472K50
R 700	RS1/16S0R0J	C 121	CKSRYB103K50
R 701	RS1/16S223J	C 122	CEAL100M16
R 702	RS1/16S472J	C 123	CEAL100M16
R 703	RS1/16S103J	C 124	CCSRCH101J50
R 704	RS1/16S223J	C 125	CKSRYB473K25
R 705	RS1/16S223J	C 126	CCSRCH101J50
R 706	RS1/16S102J	C 127	CCSRCH101J50
R 707	RS1/16S471J	C 128	CEAL220M16
R 709	RS1/16S104J	C 129	CCSRCH7R0D50
R 710	RS1/16S473J	C 130	CCSRCK2R0D50
R 716	RD1/4PU102J	C 131	CCSRCH7R0D50
R 717	RS1/16S472J	C 136	CKSRYB473K25
R 718	RS1/16S473J	C 137	CCSRCH471J50
R 719	RS1/16S223J	C 138	CCSRCH561J50
R 720	RS1/16S473J	C 140	CEAL470M10
R 721	RS1/16S473J	C 141	CKSRYB102K50
R 722	RD1/2PM102J	C 143	CEAL470M10
R 723	RS1/16S223J	C 144	CKSRYB104K25
R 724	RD1/2PM102J	C 145	CKSRYB473K25
R 801	RS1/16S222J	C 146	CKSRYB473K25
R 802	RD1/4PU222J	C 301	CCSRCH471J50
R 803	RD1/4PU222J	C 303	CKSRYB102K50
R 804	RS1/16S473J	C 304	CKSRYB102K50
R 805	RD1/4PU222J	C 305	CEAL101M10
R 806	RD1/4PU223J	C 306	CEAL101M10
R 807	RD1/4PU222J	C 307	CKSRYB103K50
		C 308	CKSRYB103K50
		C 309	CCSRCH101J50
CAPACITORS			
C 1	CEAL4R7M16	C 310	CCSRCH101J50
C 2	CKSRYB102K50	C 311	CEAL330M10
C 3	CKSRYB102K50	C 312	CEAL330M16
C 4	CEAL2R2M50	C 313	CKSRYB103K50
C 5	CKSRYB104K25	C 401	CKSRYB105K10
C 6	CCSRCH200J50	C 402	CKSRYB105K10
C 7	CCSRCH200J50	C 403	CKSRYB105K10
C 101	CKSRYB473K25	C 404	CKSRYB105K10
C 104	CKSRYB102K50	C 405	CKSRYB224K10
C 105	CKSRYB223K25	C 406	CKSRYB224K10
C 106	CKSRYB103K50	C 407	CKSRYB224K10
C 107	CKSRYB223K25	C 408	CKSRYB224K10
C 108	CKSRYB223K25	C 409	CKSRYB104K25
C 110	CKSRYB103K50	C 410	CEAL470M10
C 111	CKSRYB223K25	C 411	CEAL100M16

KEH-P1010,P1015

====Circuit Symbol and No.====Part Name	Part No.	====Circuit Symbol and No.====Part Name	Part No.
C 413	CKSRYB105K10	B Unit Number :CZW5520	
C 414	CKSRYB105K10	Unit Name :Keyboard Unit	
C 415	CKSRYB103K50		
C 416	CKSRYB103K50		
C 417	CKSRYB472K50		
C 418	CKSRYB472K50		
C 421	CEAL2R2M50		
C 422	CEAL2R2M50		
C 423	CKSRYB222K50		
C 424	CKSRYB222K50		
C 427	CKSRYB474K10		
C 428	CKSRYB474K10		
C 429	CKSRYB474K10		
C 430	CKSRYB474K10		
C 431	CKSRYB474K10		
C 432	CKSRYB474K10		
C 433	CKSRYB474K10		
C 434	CKSRYB474K10		
C 500	CKSRYB104K25		
C 501 3300µF/16V	CCH1018		
C 502	CKSRYB474K10		
C 503	CKSRYB474K10		
C 504	CKSRYB105K10		
C 505	CKSRYB105K10		
C 506	CKSRYB473K25		
C 508	CEAL100M16		
C 509	CEAL330M10		
C 511	CKSRYB224K10		
C 700	CEA471M16		
C 701	CKSRYB103K50		
C 703	CEAL470M10		
C 704	CEAL101M10		
C 705	CKSRYB103K50		
C 706	CEAL101M10		
C 709	CKSRYB102K50		
C 712	CEAL3RM50		
C 714	CEALR10M50		
C 715	CKSRYB473K25		
C 801	CCSRCH101J50		
C 803	CKSRYB473K25		
		MISCELLANEOUS	
		IC 900 IC	PD6293A
		D 900 Diode	DA204K
		L 900 Ferri-Inductor	LAU101K
		X 900 Ceramic Resonator 4.97MHz	CSS1422
		PL 901 Lamp 14V65mA	CZE2950
		PL 902 Lamp 14V65mA	CZE2950
		PL 903 Lamp 14V65mA	CZE2950
		RN 901	RAB4C473J
		RN 902	RAB4C473J
		LCD900 LCD	CZA5540
		RESISTORS	
		R 900	RS1/16S473J
		R 901	RS1/16S472J
		R 902	RS1/16S222J
		R 903	RS1/16S222J
		CAPACITORS	
		C 900	CKSRYB102K50
		C 901	CKSYF225Z16
		C 902	CKSRYB104K25
		C Unit Number :	
		Unit Name :Switch PCB	
		S 3 Slide Switch(FWD/REV)	1-0363-7002
		Miscellaneous Parts List	
		S 1 Switch(TAPE/TUN)	1-0363-7005
		S 2 Switch(Mute)	1-0363-7001
		M 1 Motor Assy	X-0363-7006
		HD 1 Head	1-0036-7123

CONTRAST TABLE of TUNER AMP UNIT

KEH-P1010/XM/UC and KEH-P1015/XM/ES have the same construction except for the following:

Symbol and Description	Part No.	
	KEH-P1010/XM/UC	KEH-P1015/XM/ES
R 18	Not used	RS1/16S473J
R 20	RDV4PU473J	Not used

6. ADJUSTMENT

There is no information to be shown in this chapter.

7. GENERAL INFORMATION

7.1 DIAGNOSIS

7.1.1 DISASSEMBLY

● Removing the Upper Case(not shown)

1.Remove the Upper Case.

● Removing the Cassette Mechanism Module(Fig.1)

① Remove the four screws and then remove the Cassette Mechanism.

● Remove the Grille Assy(Fig.1)

② Remove the two screws.

Disconnect the two stoppers and then remove the Grille Assy.

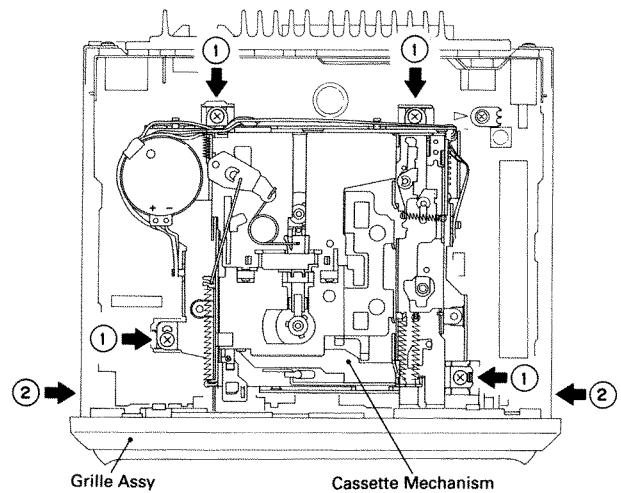


Fig. 1

● Removing the Tuner Amp Unit(Fig.2)

① Remove the three screws.

② Remove the screw.

③ Unbend the five claws and then remove the Tuner Amp Unit.

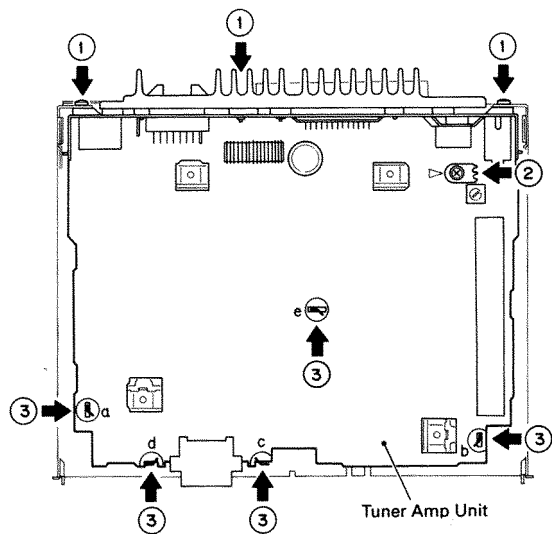
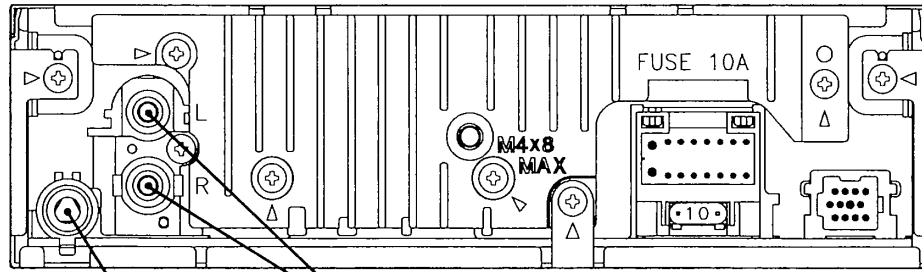
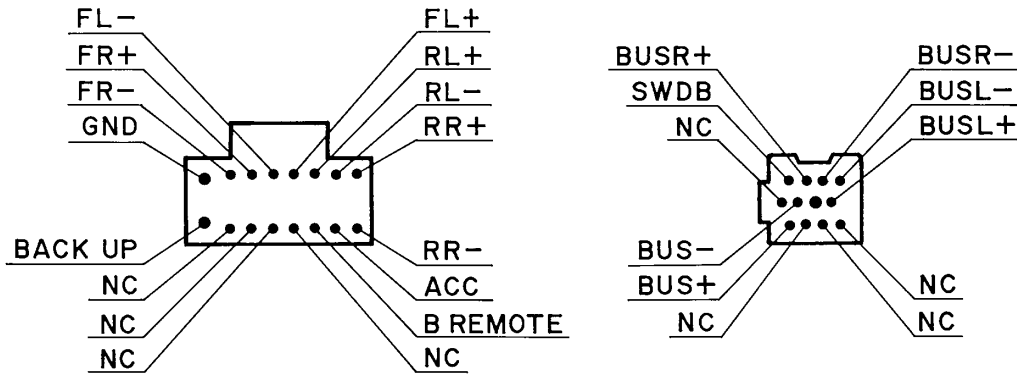


Fig. 2

7.1.2 CONNECTOR FUNCTION DESCRIPTION



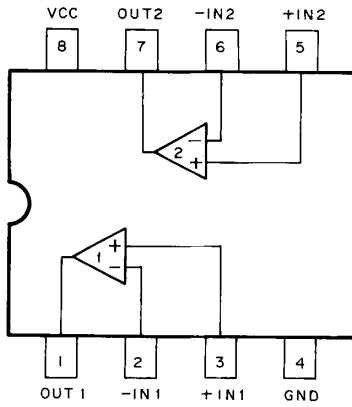
ANTENNA JACK RCA PINJACK



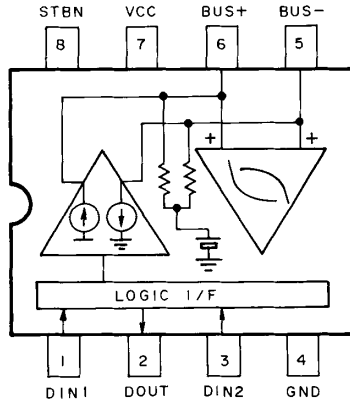
7.2 PARTS

7.2.1 IC

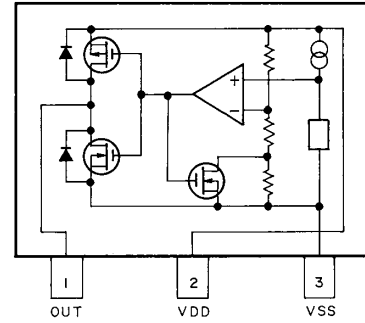
BA4560F



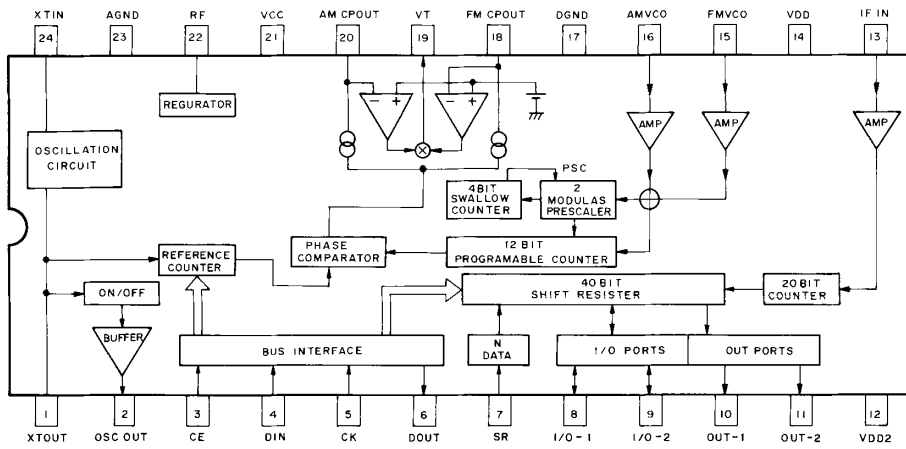
CA0008AM



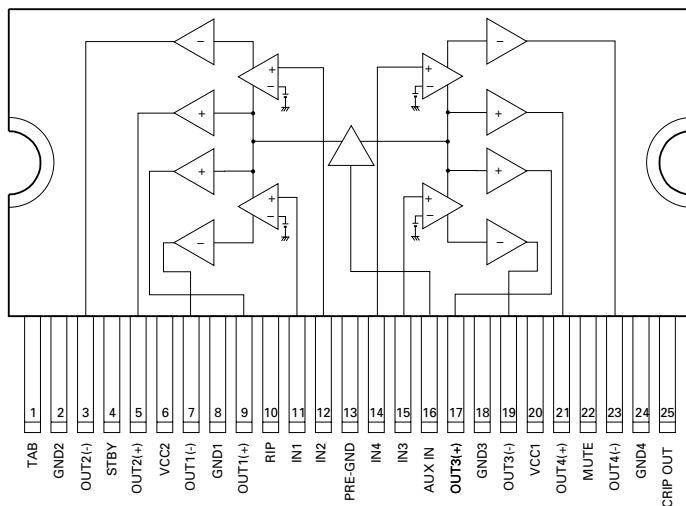
S-80834ANMP



TB2118F

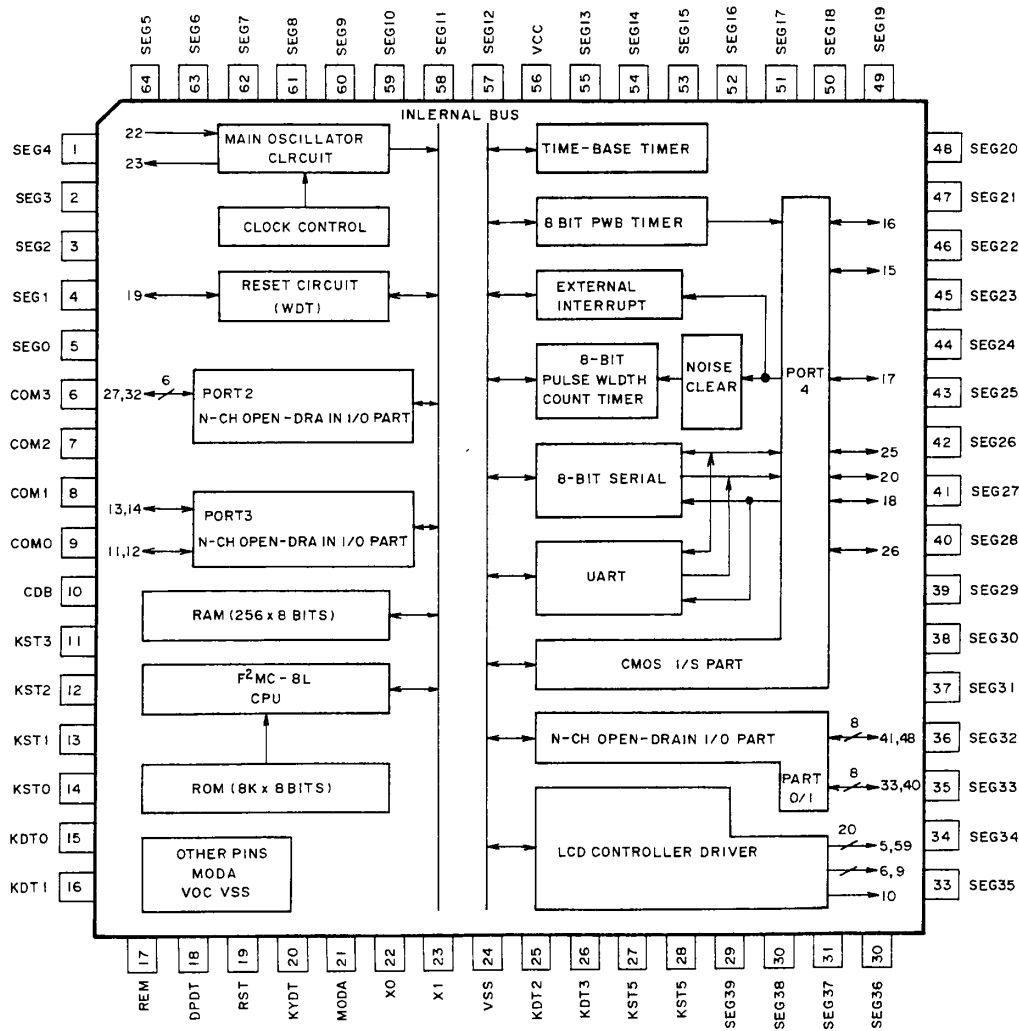


TA8277H



*IC's marked by * are MOS type.
Be careful in handling them because they are very liable to be
damaged by electrostatic induction*

*** PD6293A**

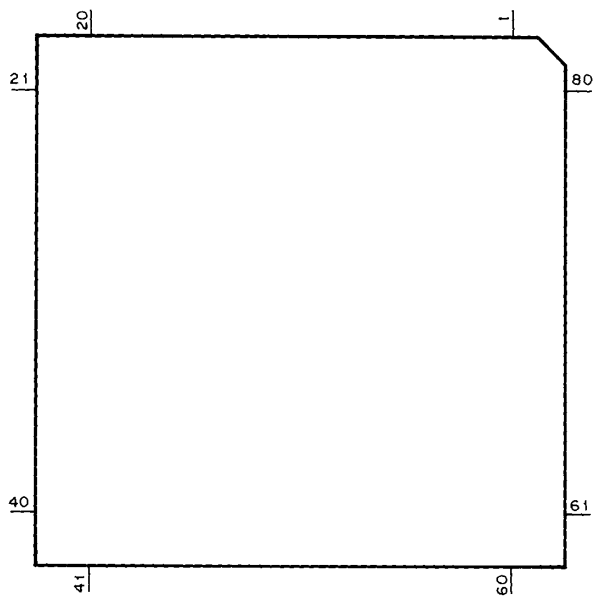


● Pin Functions(000874110)

Pin No.	Pin Name	I/O	Format	Function and Operation
1	SD	I		SD signal input
2	\overline{ST}	I		FM stereo input
3	ADPW	O		A/D converter power supply control output
4	AVSS			GND
5	MUTE	O	C	System mute output
6	NC			Not used
7	AVREF1	I		A/D converter reference voltage terminal
8	KYDT	I		Display data input
9	DPDT	O	C	Key data output
10	NC			Not used
11	TUNPDI	I		PLL IC data input
12	TUNPDO	O	C	PLL IC data output
13	TUNPCK	O	C	PLL IC clock output
14	TUNPCE	O	C	PLL IC chip enable output
15,16	NC			Not used
17	TX	O	C	IP BUS data output
18	NC			Not used
19	SWVDD	O	C	Grille chip enable output
20	ASENBO	O	C	Slave power supply control output
21	IPPW	O	C	Power supply control output for IP BUS interface IC
22	VST	O	C	Strobe pulse output for electronic volume
23	VCK	O	C	Clock output for electronic volume
24	VDT	O	C	data output for electronic volume
25,26	NC			Not used
27	SYSPW	O	C	System power output
28	NC			Not used
29	BREM	O	C	System power ON/OFF output
30-32	NC			Not used
33	VSS1			GND
34-39	NC			Not used
40	TAPE IN	I		TAPE pack-in detection input
41	FF/REW	I		FF/REW detection input
42	N/R	I		Cassette mechanism tape direction input
43	MOTOR	O	C	MOTOR power supply control output
44-53	NC			Not used
54	TUON			Not used
55	FM/AM	O	C	FM/AM band select pin "H" : FM "L" : AM
56-59	NC			Not used
60	RESET	I		Reset input
61	RX		C	IP BUS data input
62	NC			Not used
63	\overline{DSENS}	I		Grille detach sense input
64	NC			Not used
65	\overline{ASENS}	I		ACC power sense input
66	\overline{BSENS}	I		Back up power sense input
67	VSS0			GND
68	VDD1			Power supply
69	X2			Crystal oscillator connection pin
70	X1			Crystal oscillator connection pin
71	IC			(GND)
72	XT2			Not used
73	TESTIN	I		Test program mode input
74	VDD0			Power supply
75	AVREF0	I		S/D converter reference voltage terminal
76	SL	I		Signal level input
77	MODELIN	I		Model select input
78-80	NC			Not used

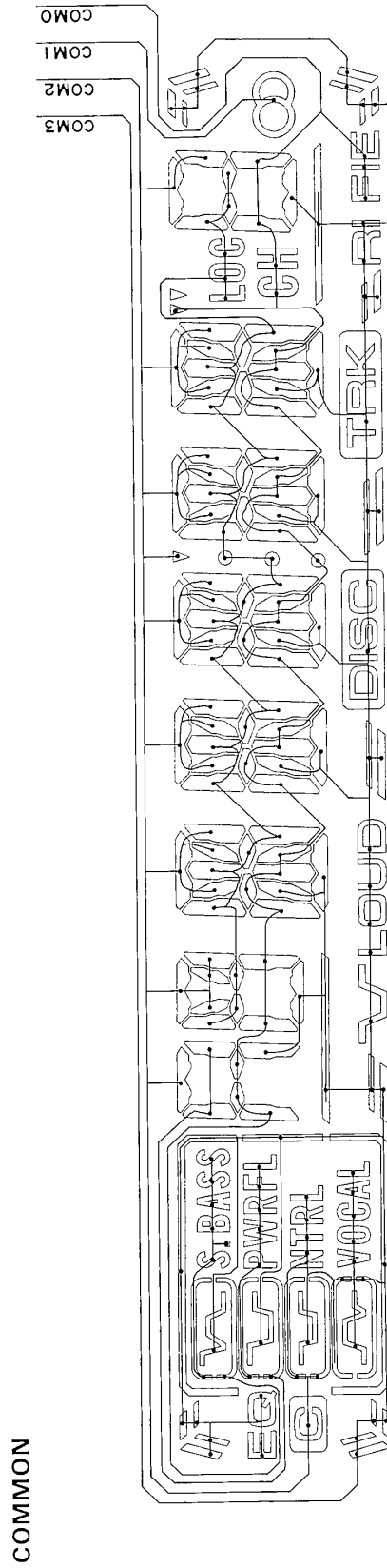
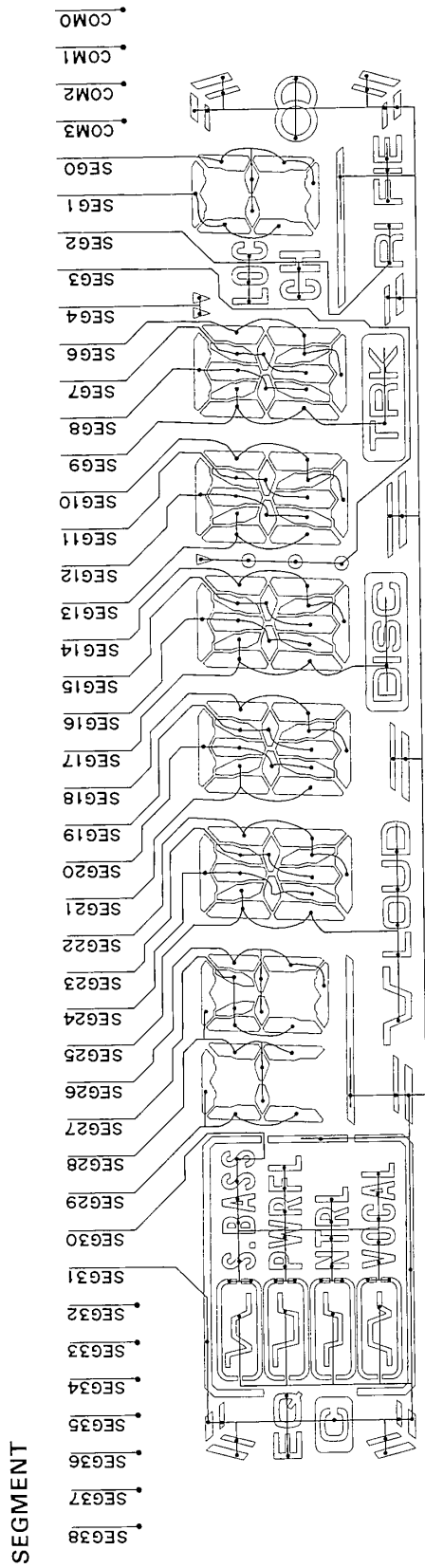
Format	Meaning
C	C MOS

* 000874110

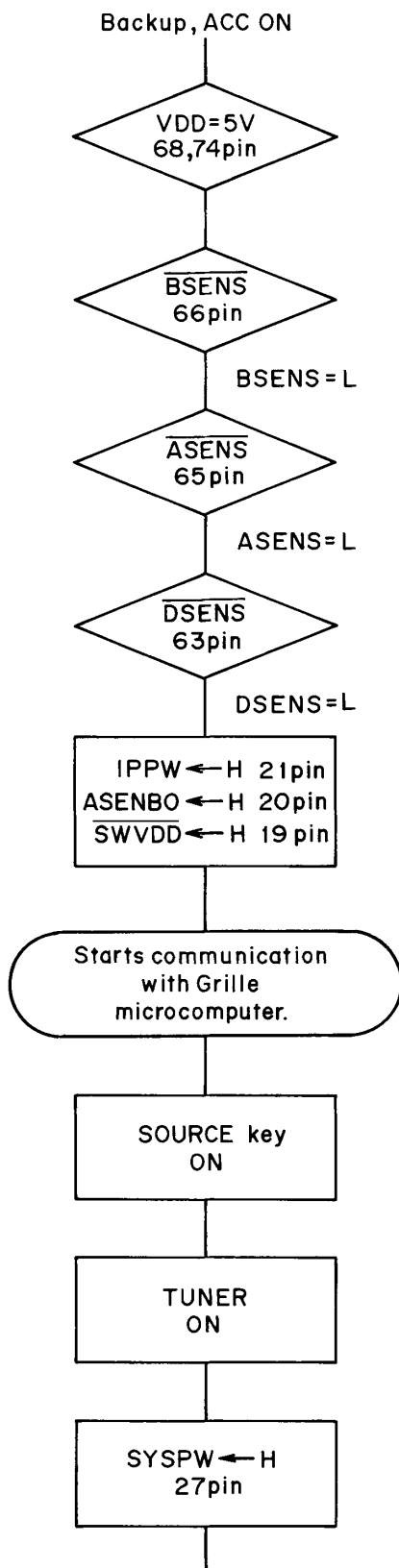


7.2.2 DISPLAY

● CZA5540



7.3 OPERATIONAL FLOW CHART

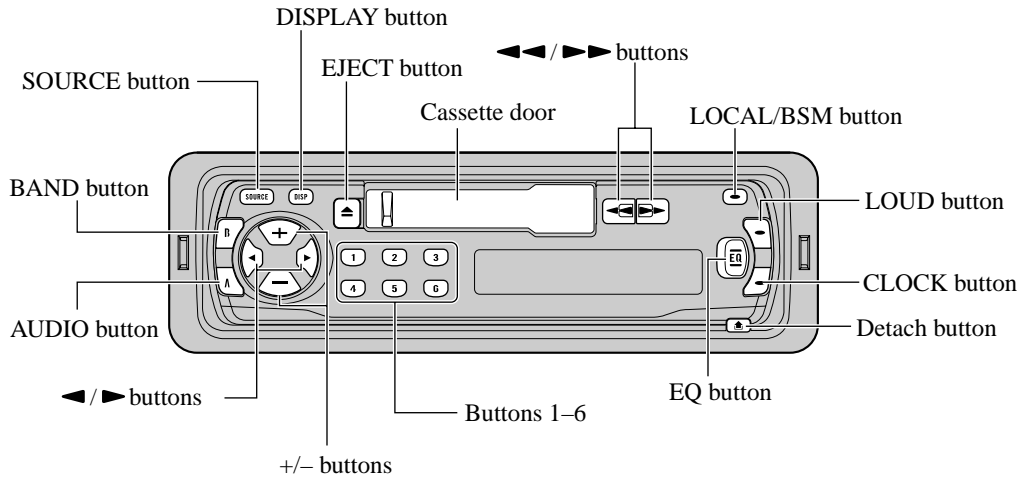


Completes power-on operation.
(After that, proceed to each source operation.)

8. OPERATIONS AND SPECIFICATIONS

Key Finder

Head Unit



Basic Operation

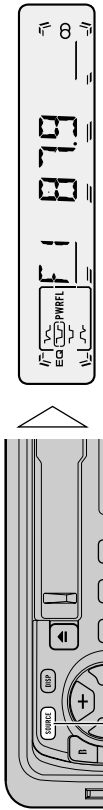
To Listen to Music

The following explains the initial operations required before you can listen to music.

Note:

- Loading a cassette in this product.

1. Select the desired source (e.g. Tuner).



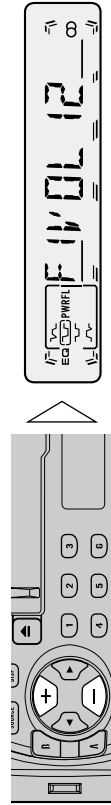
Each press changes the Source ...

Each press of the SOURCE button selects the desired source in the following order:
Tuner → Cassette player → Multi-CD player → External Unit

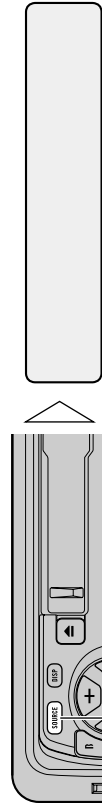
Note:

- External Unit refers to a Pioneer product (such as one available in the future) that, although incompatible as a source, enables control of basic functions by this product. Only one External Unit can be controlled by this product.
- In the following cases, the sound source will not change:
 - * When a product corresponding to each source is not connected to this product.
 - * When no tape is set in this product.
 - * When no magazine is set in the Multi-CD player.
- When this product's blue/white lead is connected to the car's Auto-antenna relay control terminal, the car's Auto-antenna extends when this product's source is switched ON. To retract the antenna, switch the source OFF.

2. Raise or lower the volume.



3. Turn the source OFF.



Hold for 1 second

Basic Operation of Tuner

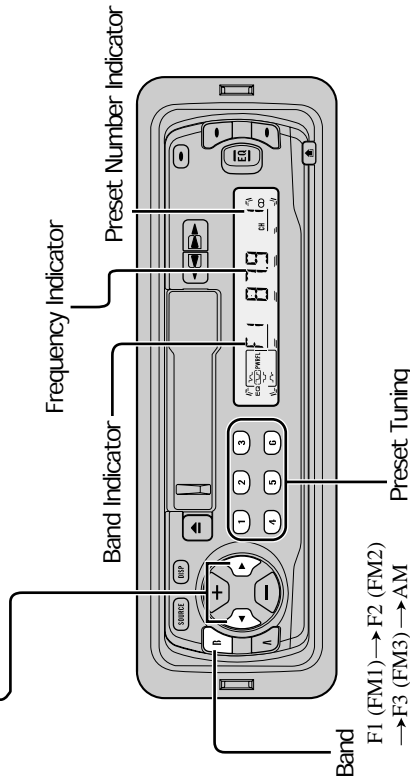
Manual and Seek Tuning

- You can select the tuning method by changing the length of time you press the ◀/▶ button.

Manual Tuning (step by step)	0.5 seconds or less
Seek Tuning	0.5 seconds or more

Note:

- If you continue pressing the button for longer than 0.5 seconds, you can skip broadcasting stations. Seek Tuning starts as soon as you release the button.
- Stereo indicator "◉" lights when a stereo station is selected.



- You can memorize broadcast stations in buttons 1 through 6 for easy, one-touch station recall.

Preset station recall	2 seconds or less
Broadcast station preset memory	2 seconds or more

Note:

- Up to 18 FM stations (6 each in F1 (FM1), F2 (FM2) and F3 (FM3)) and 6 AM stations can be stored in memory.

Basic Operation

Basic Operation of Cassette Player

Fast Forward/Rewind

- To select Fast Forward, press the button for the same direction as the direction indicator.
- To select Rewind, press the button for the opposite direction as the direction indicator.

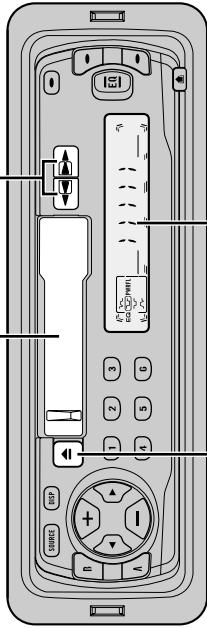
Note:

- To release Fast Forward/Rewind, lightly press the ◀◀ or ▶▶ button located on the opposite side of the one you pressed to Fast Forward or Rewind.

Direction Change

- To change the direction, press the ◀◀ and ▶▶ buttons at the same time.

Cassette Loading Slot



Eject

Basic Operation of Multi-CD Player

This product can control a Multi-CD player (sold separately).

Track Search and Fast Forward/Reverse

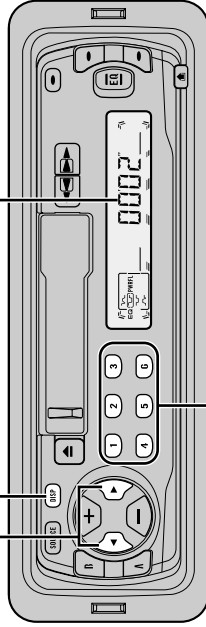
- You can select between Track Search or Fast Forward/Reverse by pressing the ◀ / ▶ button for a different length of time.

Track Search	0.5 seconds or less
Fast Forward/Reverse	Continue pressing

Switching the Display

Each press of the DISPLAY button changes the display in the following order:
 Playback mode (Play Time) → Disc and Track Number

Play Time Indicator



Disc Number Search (for 6-Disc, 12-Disc types)

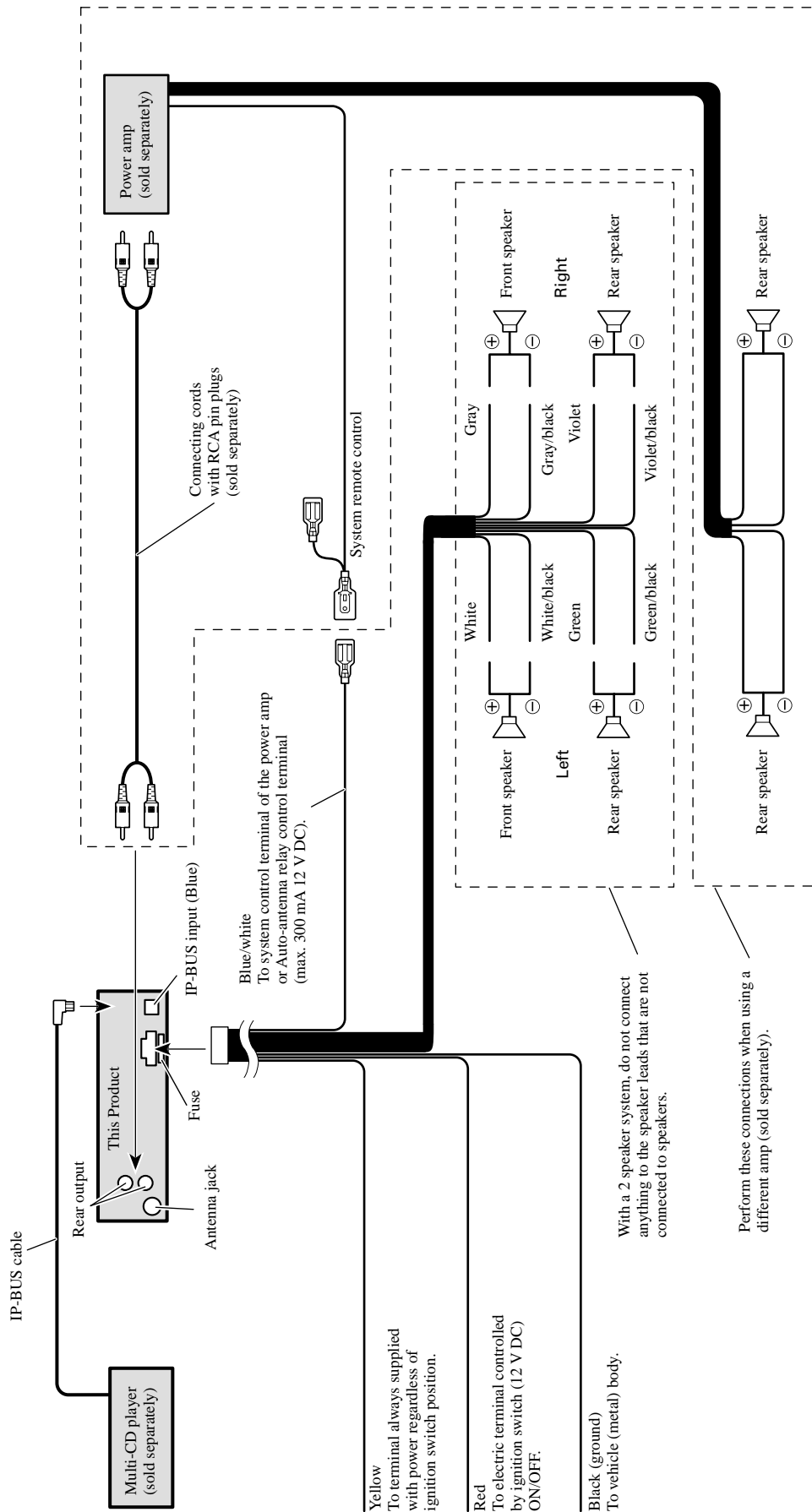
- You can select discs directly with the 1 to 6 buttons. Just press the number corresponding to the disc you want to listen to.

Note:

- When a 12-Disc Multi-CD Player is connected and you want to select disc 7 to 12, press the 1 to 6 buttons for 2 seconds or longer.

Note:

- The Multi-CD player may perform a preparatory operation, such as verifying the presence of a disc or reading disc information, when the power is turned ON or a new disc is selected for playback. "READY" is displayed.
- If the Multi-CD player cannot operate properly, an error message such as "ERR14" is displayed. Refer to the Multi-CD player owner's manual.
- If there are no discs in the Multi-CD player magazine, "NODISC" is displayed.
- You can not operate the 50-Disc Type Multi-CD Player with this product.



KEH-P1010

Specifications

General

Power source	14.4 V DC (10.8 – 15.1 V allowable)
Grounding system	Negative type
Max. current consumption	8.5 A
Dimensions	
(DIN) (chassis)	178 (W) × 50 (H) × 155 (D) mm
(nose)	[7 (W) × 2 (H) × 6-1/8 (D) in]
(D)	188 (W) × 58 (H) × 19 (D) mm
(nose)	[7-3/8 (W) × 2-1/4 (H) × 3/4 (D) in]
(D)	178 (W) × 50 (H) × 160 (D) mm
(nose)	[7 (W) × 2 (H) × 6-1/4 (D) in]
(D)	[6-3/4 (W) × 1-7/8 (H) × 1/2 (D) in]
Weight	1.2 kg (2.6 lbs)
Backup current	3.6 mA

Amplifier

Continuous power output is 20 W per channel min. into 4 ohms, both channels driven 50 to 15,000 Hz with no more than 5% THD.

Maximum power output 45 W × 4
Load impedance 4 Ω (4 – 8 Ω allowable)

Preout maximum output level/

output impedance 2.2 V/1 kΩ

Equalizer (3 band equalizer)

(Low) ±12 dB

(Mid) ±12 dB

(High) ±12 dB

Loudness contour

(Low) +3.5 dB (100 Hz), +3 dB (10 kHz)

(Mid) +10 dB (100 Hz), +6.5 dB (10 kHz)

(High) +11 dB (100 Hz), +11 dB (10 kHz)

(volume: -30 dB)

Cassette player

Tape Compact cassette tape (C-30 – C-90)

Tape speed 4.76 cm/sec. (+0.14cm/sec., -0.05cm/sec.)

Fast forward/rewinding time ... Approx. 100 sec. for C-60

Wow & flutter 0.13% (WRMS)

Frequency response 30 – 16,000 Hz (±3 dB)

Stereo separation 45 dB

Signal-to-noise ratio 41 dB (IHF-A network)

FM tuner

Frequency range	87.9 – 107.9 MHz
Usable sensitivity	11 dBf
50 dB quieting sensitivity	17 dBf

(2.2 μV/75 Ω, mono)

Signal-to-noise ratio 58 dB (IHF-A network)

Distortion 0.66% (at 65 dBf, 1 kHz, stereo)

Frequency response 30 – 15,000 Hz (±3 dB)

Stereo separation 24 dB (at 65 dBf, 1 kHz)

Selectivity 71 dB (2ACA)

Three-signal intermodulation

(desired signal level) 47 dBf

(two undesired signal level: 100 dBf)

AM tuner

Frequency range 530 – 1,710 kHz (10 kHz)

Usable sensitivity 20 μV (S/N: 20 dB)

Selectivity 50 dB (±10 kHz)

KEH-P1015

Specifications

General

Power source	14.4 V DC (10.8 – 15.1 V allowable)
Grounding system	Negative type
Max. current consumption	8.5 A
Dimensions	
(DIN) (chassis)	178 (W) × 50 (H) × 155 (D) mm
(nose)	188 (W) × 58 (H) × 19 (D) mm
(D)	178 (W) × 50 (H) × 160 (D) mm
(nose)	170 (W) × 48 (H) × 14 (D) mm
Weight	1.2 kg
Backup current	3.6 mA

(2.2 μV/75 Ω, mono)

Signal-to-noise ratio 58 dB (IEC-A network)

Distortion 0.7% (at 65 dBf, 1 kHz, stereo)

Frequency response 30 – 15,000 Hz (±3 dB)

Stereo separation 24 dB (at 65 dBf, 1 kHz)

AM tuner

Frequency range 531 – 1,602 kHz (9 kHz)

Usable sensitivity 20 μV (S/N: 20 dB)

Selectivity 50 dB (±10 kHz)

FM tuner

Frequency range	87.5 – 108 MHz
Usable sensitivity	11 dBf
50 dB quieting sensitivity	17 dBf

(1.1 μV/75 Ω, mono, S/N: 30 dB)

Signal-to-noise ratio 58 dB (IEC-A network)

Distortion 0.7% (at 65 dBf, 1 kHz, stereo)

Frequency response 30 – 15,000 Hz (±3 dB)

Stereo separation 24 dB (at 65 dBf, 1 kHz)

AM tuner

Frequency range 531 – 1,602 kHz (9 kHz)

Usable sensitivity 20 μV (S/N: 20 dB)

Selectivity 50 dB (±10 kHz)

Amplifier

Continuous power output is 20 W per channel min. into 4 ohms, both channels driven 50 to 15,000 Hz with no more than 5% THD.

Maximum power output 45 W × 4
Load impedance 4 Ω (4 – 8 Ω allowable)

Preout maximum output

level/output impedance 2.2 V/1 kΩ

Equalizer (3 band equalizer)

(Low) ±12 dB

(Mid) ±12 dB

(High) ±12 dB

Loudness contour

(Low) +3.5 dB (100 Hz), +3 dB (10 kHz)

(Mid) +10 dB (100 Hz), +6.5 dB (10 kHz)

(High) +11 dB (100 Hz), +11 dB (10 kHz)

(volume: -30 dB)

Cassette player

Tape Compact cassette tape (C-30 – C-90)

Tape speed 4.76 cm/sec. (+0.14cm/sec., -0.05cm/sec.)

Fast forward/rewinding time ... Approx. 100 sec. for C-60

Wow & flutter 0.13% (WRMS)

Frequency response 30 – 16,000 Hz (±3 dB)

Stereo separation 45 dB

Signal-to-noise ratio 41 dB (IEC-A network)

Note:

- Specifications and the design are subject to possible modification without notice due to improvements.

Note:

- Specifications and the design are subject to possible modification without notice due to improvements.

Pioneer

***Service
Manual***

ORDER NO.
PROVISIONAL

MULTI-CD CONTROL HIGH POWER CASSETTE PLAYER WITH FM/AM TUNER

KEH-P1010

X1M/UC

KEH-P1015

X1M/ES

PIONEER CORPORATION 4-1, Meguro 1-Chome, Meguro-ku, Tokyo 153-8654, Japan
PIONEER ELECTRONICS SERVICE INC. P.O.Box 1760, Long Beach, CA 90801-1760 U.S.A.
PIONEER EUROPE NV Haven 1087 Keetberglaan 1, 9120 Melsele, Belgium
PIONEER ELECTRONICS ASIACENTRE PTE.LTD. 253 Alexandra Road, #04-01, Singapore 159936

© PIONEER CORPORATION 2000

K-ZZT. DEC. 2000 Printed in Japan

1. SAFETY INFORMATION

● KEH-P1010/XM/UC

CAUTION

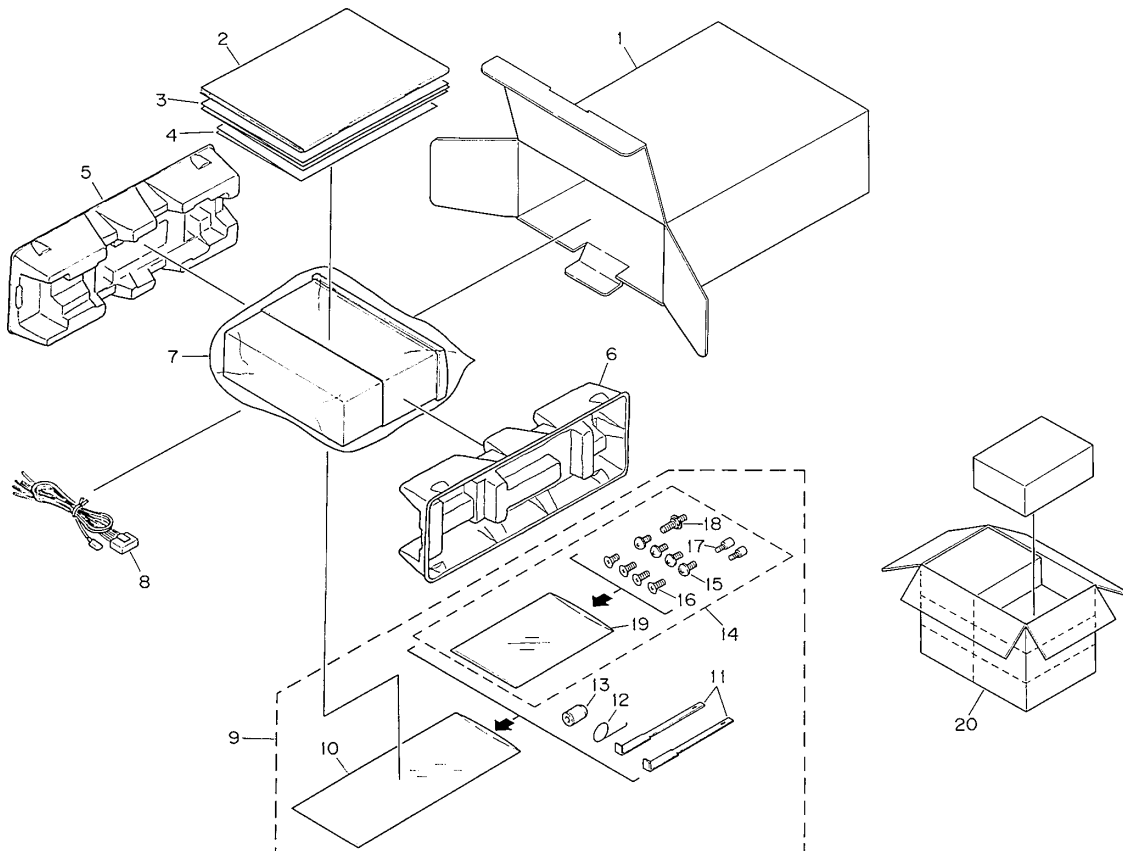
This service manual is intended for qualified service technicians; it is not meant for the casual do-it-yourselfer. Qualified technicians have the necessary test equipment and tools, and have been trained to properly and safely repair complex products such as those covered by this manual. Improperly performed repairs can adversely affect the safety and reliability of the product and may void the warranty. If you are not qualified to perform the repair of this product properly and safely; you should not risk trying to do so and refer the repair to a qualified service technician.

WARNING

This product contains lead in solder and certain electrical parts contain chemicals which are known to the State of California to cause cancer, birth defects or other reproductive harm.
Health & Safety Code Section 25249.6 - Proposition 65

2. EXPLODED VIEWS AND PARTS LIST

2.1 PACKING



NOTE

- Parts marked by “*” are generally unavailable because they are not in our Master Spare Parts List.
- Screws adjacent to ∇ mark on the product are used for disassembly.

● PACKING SECTION PARTS LIST

KEH-P1010/XM/UC

Mark	No.	Description	Part No.	Mark	No.	Description	Part No.
	1	Carton	CZE5573		11	Handle	CNC5395
	2	Owner's Manual	CZR2936		12	Spring	CBH1650
	3	Installation Manual	CZR2937		13	Bush	CNV3930
*	4	Card	ARY1048		14	Screw Assy	CZE2952
	5	Protector	CHP1623		15	Screw	TRZ50P080FMC
	6	Protector	CHP1622		16	Screw	CRZ50P080FMC
	7	Polyethylene Bag	CEG1173		17	Screw(M2x4)	CBA1488
	8	Cord Assy	CZD2976		18	Screw	CBA1002
	9	Accessory Assy	CZE2954	*	19	Polyethylene Bag	CEG-127
*	10	Polyethylene Bag	CZE2908		20	Contain Box	CZH5574

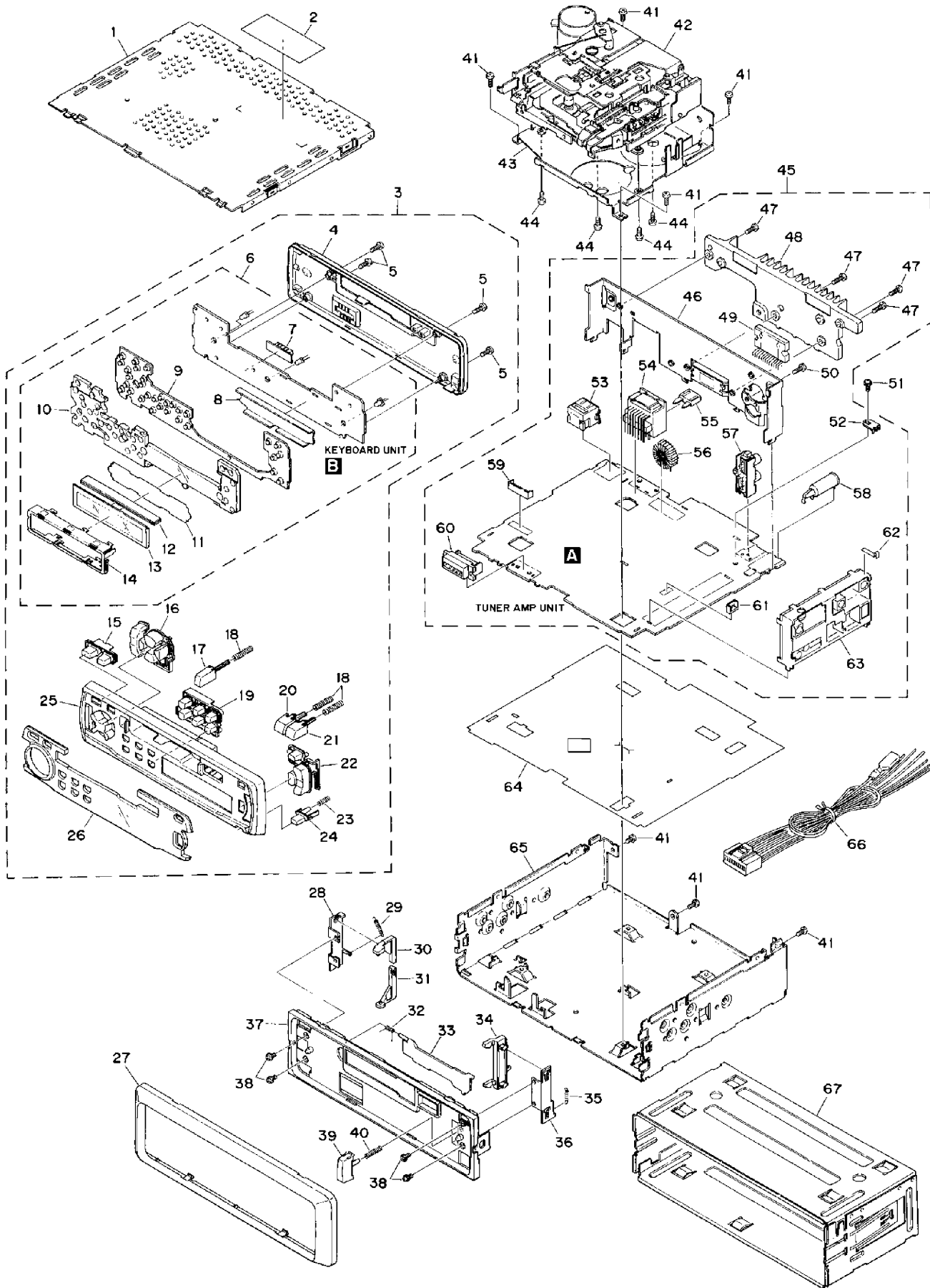
KEH-P1015/XM/ES

Mark	No.	Description	Part No.	Mark	No.	Description	Part No.
	1	Carton	CZH5575		11	Handle	CNC5395
	2	Owner's Manual	CZR2938		12	Spring	CBH1650
	3	Installation Manual	CZR2939		13	Bush	CNV3930
	4			14	Screw Assy	CZE2953
	5	Protector	CHP1623		15	Screw	TRZ50P080FMC
	6	Protector	CHP1622		16	Screw	CRZ50P080FMC
	7	Polyethylene Bag	CZE2903		17	
	8	Cord Assy	CZD2976		18	Screw	CBA1002
	9	Accessory Assy	CZE2955	*	19	Polyethylene Bag	CEG-127
*	10	Polyethylene Bag	CZE2908		20	Contain Box	CZH5576

Owner's Manual,Installation Manual

Part No.	Language
CZR2936	English, French, Spanish
CZR2937	English, French, Spanish
CZR2938	English, Spanish, Portuguese, China, Arabic
CZR2939	English, Spanish, Portuguese, China, Arabic

2.2 EXTERIOR



● **EXTERIOR SECTION PARTS LIST**

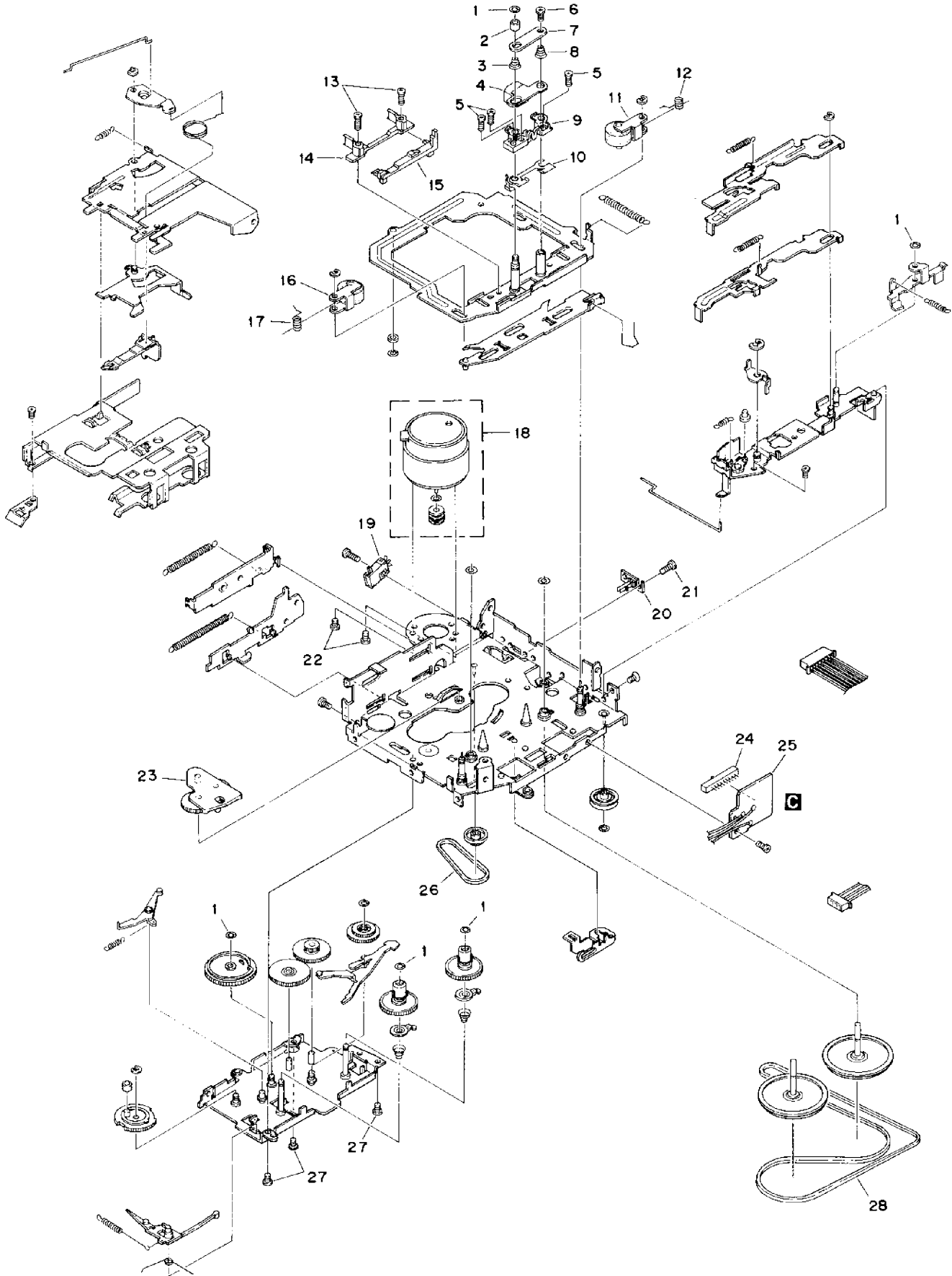
Mark	No.	Description	Part No.	Mark	No.	Description	Part No.
	1	Case	CZN6739		36	Bracket	CNC6791
*	2	Label	CZA5543		37	Panel	CZN6755
	3	Grille Unit	See Contrast table(2)		38	Screw	IMS20P030FZK
	4	Cover	CZN6753		39	Button	CAC4836
	5	Screw	BPZ20P100FZK		40	Spring	CBH1996
	6	Keyboard Unit	CZW5520		41	Screw	BSZ26P060FMC
	7	Connector(CN900)	CKS3580		42	Mechanism	CZX5514
	8	Holder	CZN6759		43	Bracket	CZN6738
	9	Rubber	CZN6744		44	Screw	BMZ26P040FMC
	10	Lighting Conductor	CZN6758		45	Tuner Amp Unit	See Contrast table(2)
	11	Sheet	CZN6760	*	46	Panel	CNZ6741
	12	Connector	CZN6745		47	Screw	BSZ26P100FMC
	13	LCD(LCD900)	CZA5540	*	48	Heat Sink	CZN6740
	14	Holder	CZN6743		49	IC(IC500)	TA8277H
	15	Button(SOURCE)	CZA5535		50	Screw	BPZ26P100FZK
	16	Button(CROSS)	CZA5532		51	Screw	ISS26P055FUC
	17	Button(EJECT)	CZA5531		52	Terminal(CN101)	CKF1059
	18	Spring	CZB2976		53	Connector(CN600)	CKS3408
	19	Button(1-6)	CZA5533		54	Connector(CN200)	CZK2943
	20	Button(REW)	CZA5530		55	Fuse(10A)	CEK1208
	21	Button(FF)	CZA5529		56	Choke Coil(L700)	CTH1221
	22	Button(EQ)	CZA5534		57	Pin Jack(CN700)	CKB1041
	23	Spring	CZB2977		58	Antenna Jack(CN100)	CKX1056
	24	Button	CAC5789		59	Plag(CN300)	CZK2946
	25	Grille	CZN6746		60	Connector(CN800)	CKS3581
	26	Plate Assy	See Contrast table(2)		61	Plug(CN350)	CZK2945
	27	Panel	CNS6344		62	Plate	CZN6730
	28	Bracket	CNC6135		63	FM/AM Tuner Unit	CZW5523
	29	Spring	CBH1834		64	Insulator	CZN6742
	30	Arm	CNV4692		65	Chassis	CZN6735
	31	Arm	CNV4693		66	Cord Assy	CZD2976
	32	Spring	CBH2126		67	Holder Unit	CXB6681
	33	Door	CAT2109				
	34	Arm	CNV4728				
	35	Spring	CBH1835				

(2)CONTRAST TABLE

KEH-P1010/XM/UC and KEH-P1015/XM/ES have the same cuntruction except for the following:

Mark No.	Symbol and Description	Part No.	
		KEH-P1010/XM/UC	KEH-P1015/XM/ES
3	Grille Unit	CZ X 5 5 1 0	C Z X 5 5 1 1
26	Plate Assy	C Z X 5 5 0 5	C Z X 5 5 0 6
45	Tuner Amp Unit	C Z W 5 5 1 7	C Z W 5 5 1 8

2.3 CASSETTE MECHANISM



NOTE

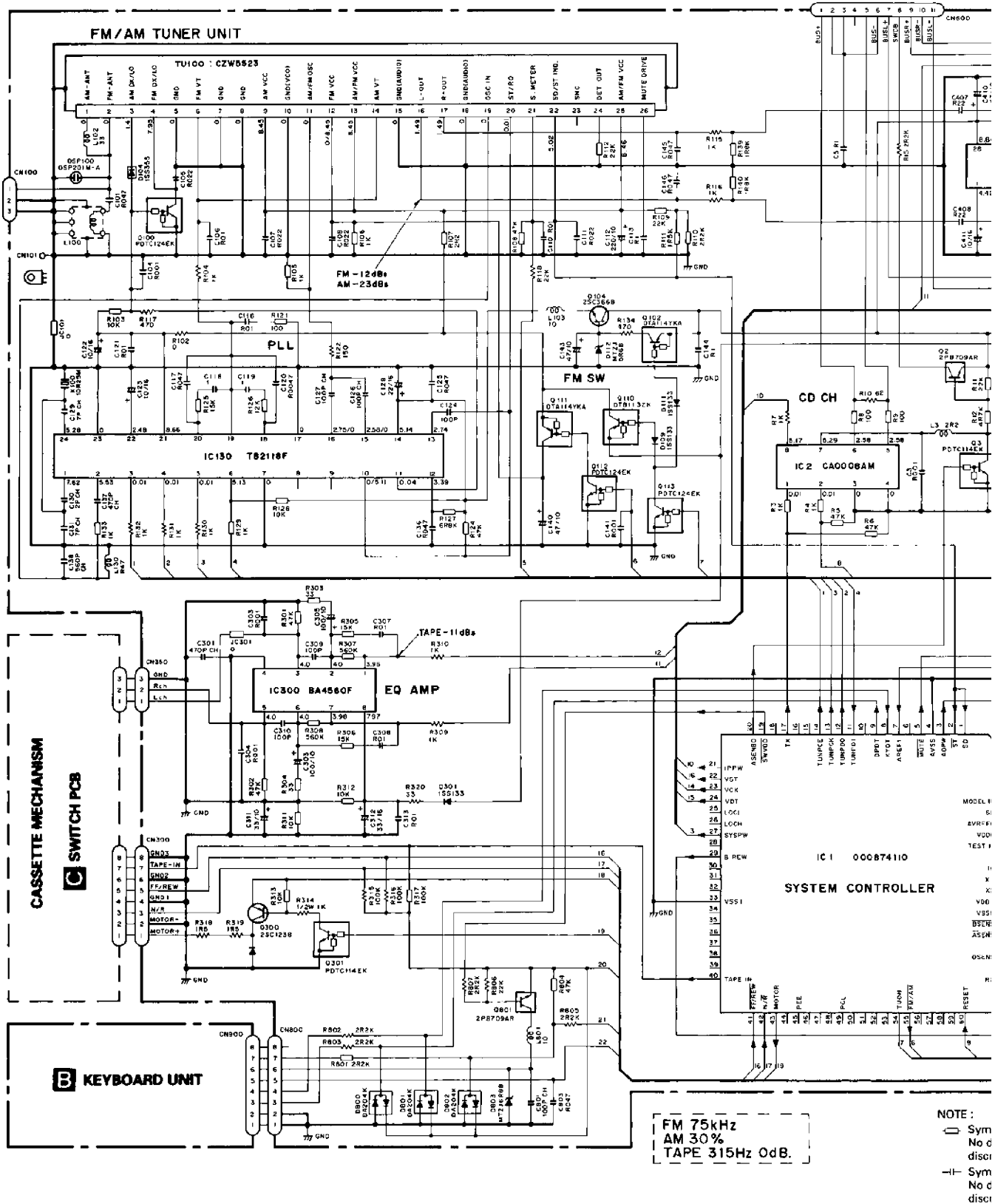
- For the cassette mechanism, only the parts listed here are available as spare parts.
The others (not shown in the list) cannot be supplied.

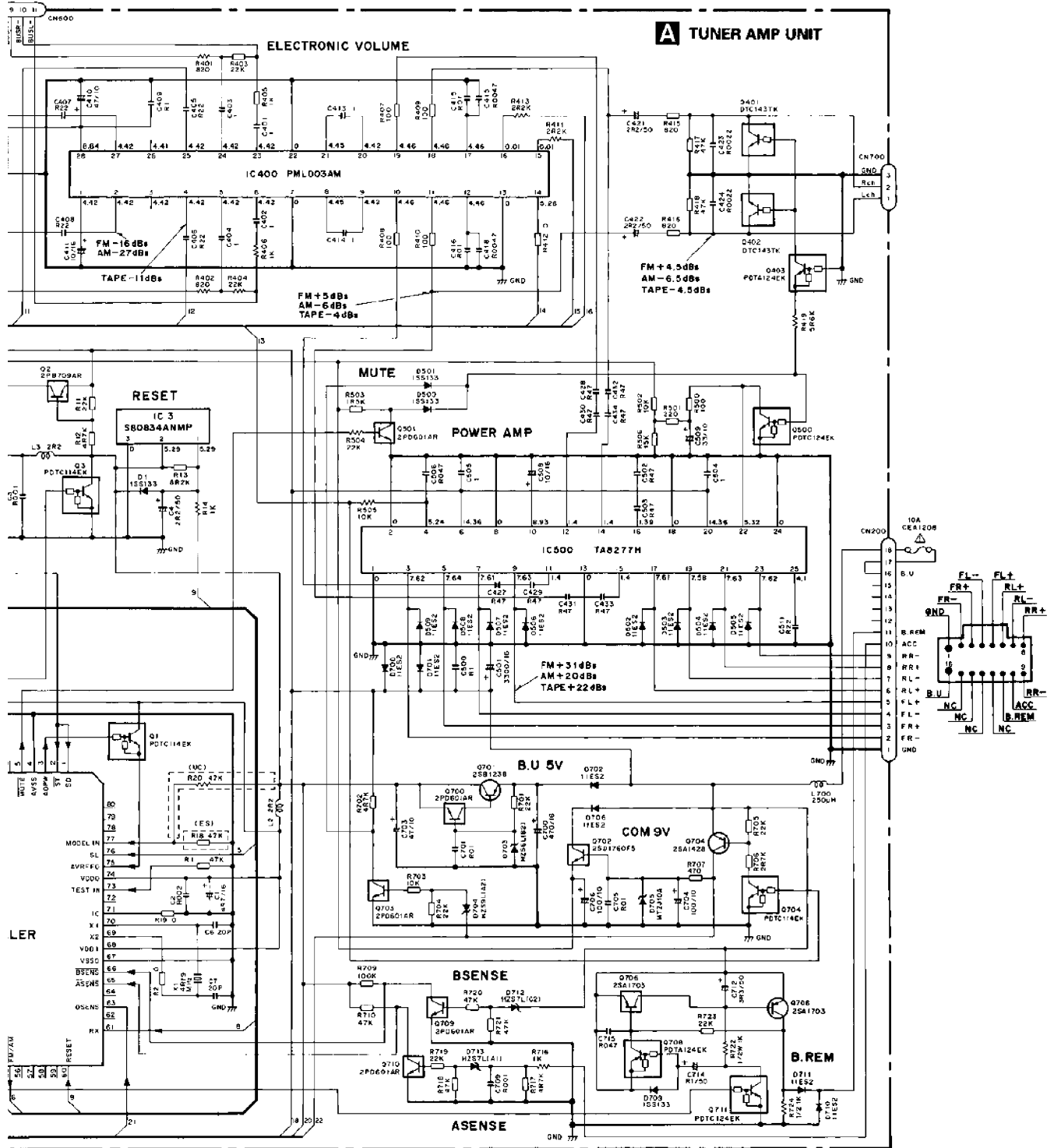
● CASSETTE MECHANISM SECTION PARTS LIST

Mark	No.	Description	Part No.
	1	Washer	1-0036-5024
	2	Roller	1-0363-3018
	3	Spring	1-0036-4011
	4	Head	1-0036-7123
	5	Screw	1-0138-5002
	6	Screw	2-1012-0040-C2
	7	Plate	1-0036-1015
	8	Spring	1-0036-4010
	9	Arm	10138-2005-3
	10	Shim	1-0138-1006
	11	Pinch Arm (F) Assy	1-0036-6014
	12	Spring	1-0363-4003
	13	Screw	2-1032-0070-C2
	14	Tape Guide	1-0038-2018
	15	Link	1-0363-2006
	16	Pinch Arm (R) Assy	1-0036-6013
	17	Spring	1-0363-4004
	18	Motor Assy (M1)	X-0363-7006
	19	Power Switch (S1)	1-0363-7005
	20	Mute Switch (S2)	1-0363-7001
	21	Screw	213317040-C2
	22	Screw	2-1032-0025-C2
	23	Arm Assy	X-0363-6003
	24	Slide Switch (S3)	1-0363-7002
	25	SW PWB	1-0363-7008
	26	Belt	1-0036-5018
	27	Screw	213820030-C2
	28	Belt	1-0036-5004

3. BLOCK DIAGRAM AND SCHEMATIC DIAGRAM

3.2 OVERALL CONNECTION DIAGRAM





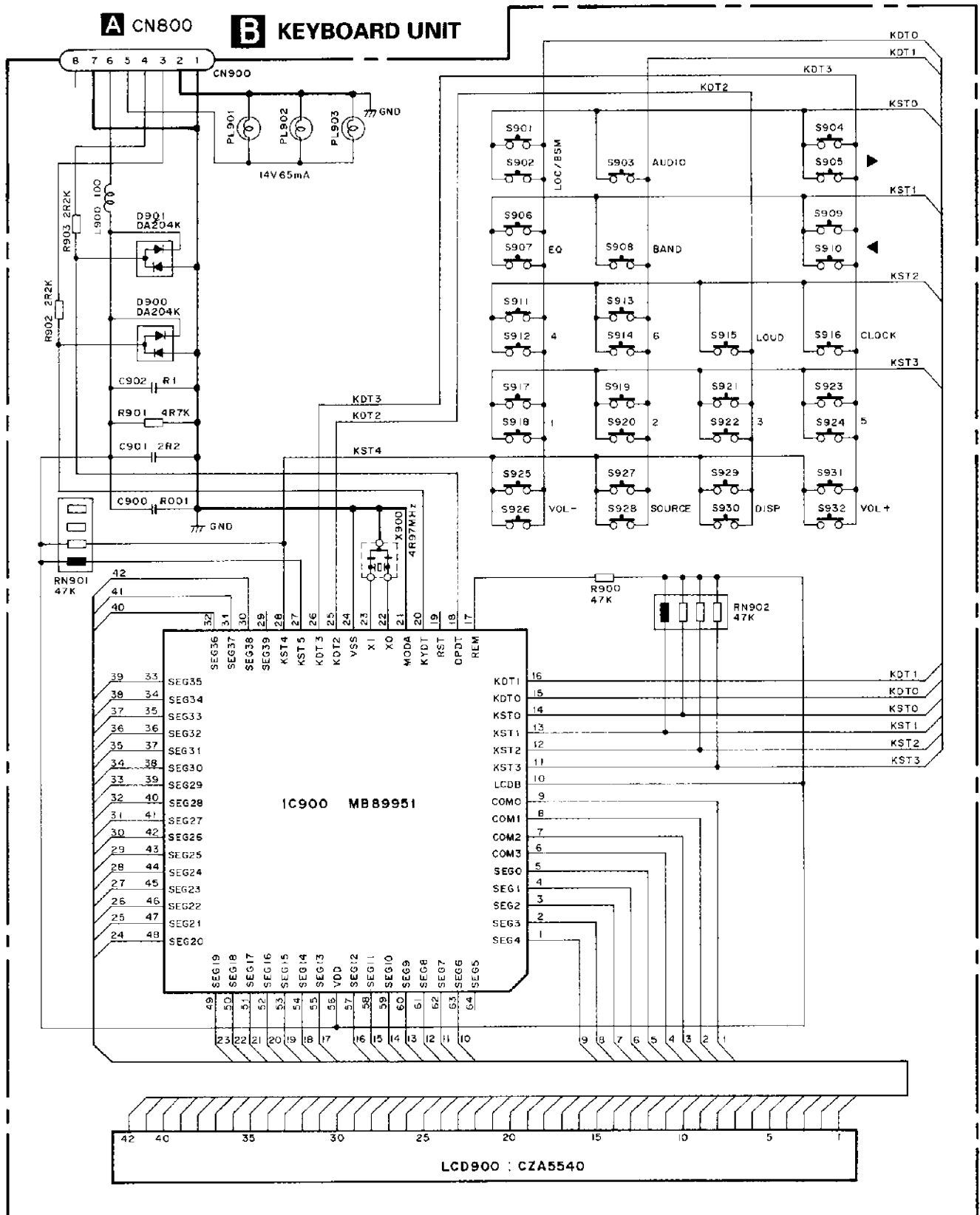
NOTE:
 □ Symbol indicates a resistor.
 No differentiation is made between chip resistors and discrete resistors.
 —|— Symbol indicates a capacitor.
 No differentiation is made between chip capacitors and discrete capacitors.

Decimal points for resistor and capacitor fixed values are expressed as:
 2.2 → 2R2
 0.022 → R022

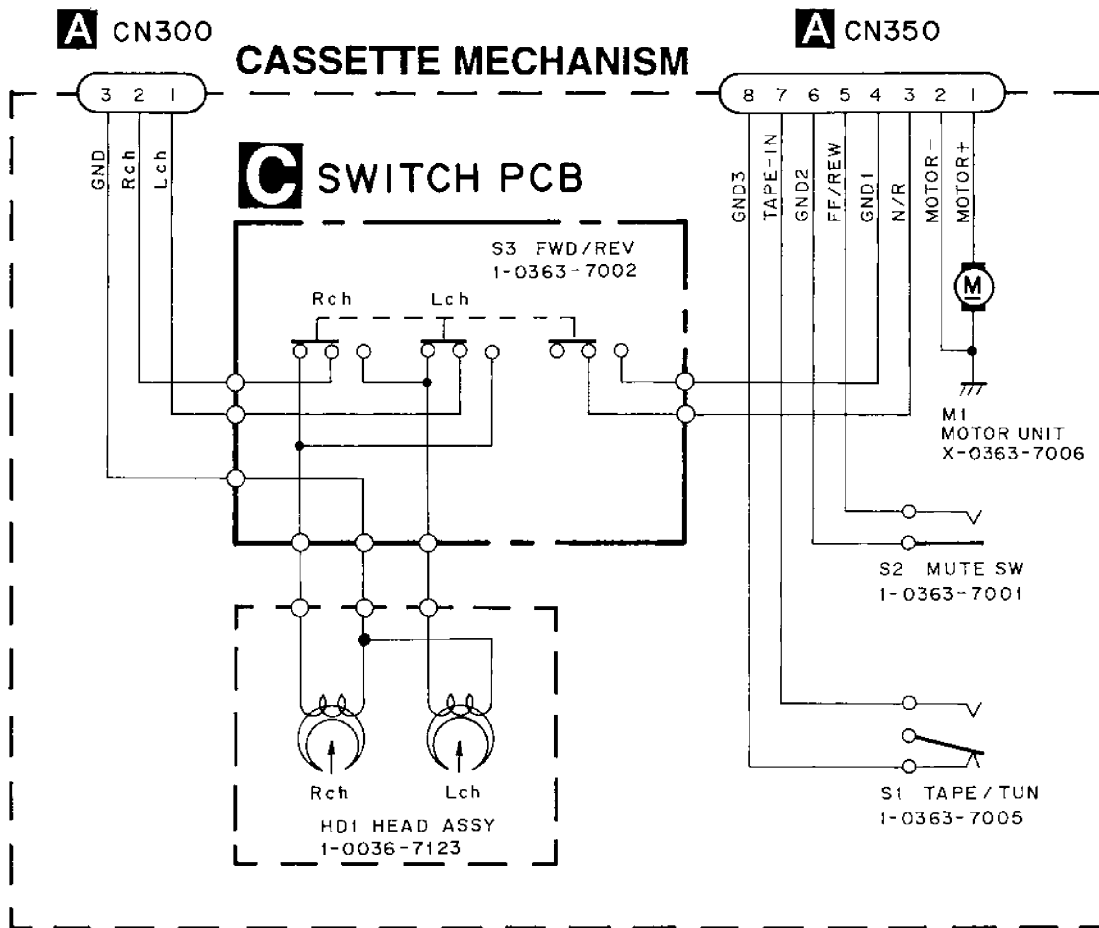
The > mark found on some component parts indicates the importance of the safety factor of the part. Therefore, when replacing, be sure to use parts of identical designation.



3.3 KEYBOARD UNIT



3.4 CASSETTE MECHANISM



SWITCHES :

- S1 : TAPE/TUN SWITCH.....TAPE/TUN
- S2 : MUTE SWITCHON-OFF
- S3 : FWD/REV SWITCH.....FWD-REV

The underlined indicates the switch position.

5. ELECTRICAL PARTS LIST

NOTES:

- Parts whose parts numbers are omitted are subject to being not supplied.
- The part numbers shown below indicate chip components.

Chip Resistor

RS1/_S__J,RS1/_S__J

Chip Capacitor (except for CQS.....)

CKS....., CCS....., CSZS.....

====Circuit Symbol and No.====Part Name	Part No.	====Circuit Symbol and No.====Part Name	Part No.
A Unit Number :CZW5517(KEH-P1010/XM/UC)		Q 711 Transistor	DTC124EK
:CZW5518(KEH-P1015/XM/ES)		Q 801 Transistor	2PB709A
Unit Name :Tuner Amp Unit		D 1 Diode	1SS133
		D 104 Diode	1SS355
		D 109 Diode	1SS133
MISCELLANEOUS			
IC 1 IC	000874110	D 111 Diode	1SS133
IC 2 IC	CA0008AM	D 112 Diode	MTZJ5R6(B)
IC 3 IC	S-80834ANMP	D 300 Diode	11ES2
IC 130 IC	TB2118F	D 301 Diode	1SS133
IC 300 IC	BA4560F	D 500 Diode	1SS133
IC 400 IC	PML003AM		
IC 500 IC	TA8277H	D 501 Diode	1SS133
Q 1 Transistor	DTC114EK	D 502 Diode	11ES2
Q 2 Transistor	2PB709A	D 503 Diode	11ES2
Q 3 Transistor	DTC114EK	D 504 Diode	11ES2
		D 505 Diode	11ES2
Q 100 Transistor	DTC124EK		
Q 102 Transistor	DTA114YKA	D 506 Diode	11ES2
Q 104 Transistor	2SC3668	D 507 Diode	11ES2
Q 110 Transistor	DTB113ZK	D 508 Diode	11ES2
Q 111 Transistor	DTA114YKA	D 509 Diode	11ES2
		D 700 Diode	11ES2
Q 112 Transistor	DTC124EK		
Q 113 Transistor	DTC124EK	D 701 Diode	11ES2
Q 300 Transistor	2SB1238	D 702 Diode	11ES2
Q 301 Transistor	DTC114EK	D 703 Diode	HZS6L(B2)
Q 401 Transistor	DTC143TK	D 704 Diode	HZS9L(A2)
		D 705 Diode	MTZJ100(A)
Q 402 Transistor	DTC143TK		
Q 403 Transistor	DTA124EK		
Q 500 Transistor	DTC124EK	D 706 Diode	11ES2
Q 501 Transistor	2PD601A	D 709 Diode	1SS133
Q 700 Transistor	2PD601A	D 710 Diode	11ES2
		D 711 Diode	11ES2
		D 712 Diode	HZS7L(C2)
Q 701 Transistor	2SB1238		
Q 702 Transistor	2SD1760F5		
Q 703 Transistor	2PD601A	D 713 Diode	HZS7L(A1)
Q 704 Transistor	2SA1428	D 800 Diode	DA204K
Q 705 Transistor	DTC114EK	D 801 Diode	DA204K
		D 802 Diode	DA204K
Q 706 Transistor	2SA1703	D 803 Diode	MTZJ6R8(B)
Q 707 Transistor	2PB709A		
Q 708 Transistor	DTA124EK		
Q 709 Transistor	2PD601A		
Q 710 Transistor	2PD601A		

KEH-P1010 , P1015

====Circuit Symbol and No.====Part Name	Part No.	====Circuit Symbol and No.====Part Name	Part No.
L 2 Ferri-Inductor	LAU2R2K	R 125	RS1/16S153J
L 3 Ferri-Inductor	LAU2R2K	R 126	RS1/16S123J
L 100 Coil	CZT2930	R 127	RS1/16S682J
L 102 Ferri-Inductor	LAU330K	R 128	RS1/16S103J
L 103 Inductor	LAU100K	R 129	RS1/16S102J
L 130 Inductor	LAUR47K	R 130	RD1/4PU102J
L 700 Choke Coil 250 μ H	CTH1221	R 131	RD1/4PU102J
L 801 Inductor	LAU100K	R 132	RD1/4PU10
X 1 Crystal Resonator 4.194304MHz	CZS2918	R 133	RS1/16S102J
X 100 Crystal Resonator 10.250MHz	CSS1432	R 134	RD1/4PU471J
DSP100 Surge Protector	DSP-200-A11F	R 139	RS1/16S182J
TU 100 FM/AM Tuner Unit	CZW5523	R 140	RS1/16S182J
JC 101	RS1/8S0R0J	R 301	RS1/16S473J
JC 301	RS1/16S0R0J	R 302	RS1/16S473J
		R 303	RS1/16S330J
RESISTORS		R 304	RS1/16S330J
R 1	RS1/16S473J	R 305	RS1/16S153J
R 3	RS1/16S102J	R 306	RS1/16S153J
R 4	RS1/16S102J	R 307	RS1/16S564J
R 5	RS1/16S473J	R 308	RS1/16S564J
R 6	RS1/16S473J	R 309	RD1/4PU102J
		R 310	RD1/4PU102J
R 7	RD1/4PU102J	R 311	RS1/16S103J
R 8	RS1/16S101J	R 312	RS1/16S103J
R 9	RS1/16S101J	R 313	RS1/16S103J
R 10	RD1/4PU620J		
R 11	RS1/16S223J	R 314	RD1/2PM102J
		R 315	RD1/4PU104J
R 12	RS1/16S472J	R 316	RD1/4PU104J
R 13	RS1/16S822J	R 317	RS1/16S104J
R 14	RD1/4PU102J	R 318	RD1/4PU1R5J
R 15	RD1/4PU222J		
R 18	See Contrast Table	R 319	RD1/4PU1R5J
		R 320	RD1/4PU330J
R 19	RS1/16S0R0J	R 401	RD1/4PU821J
R 20	See Contrast Table	R 402	RD1/4PU821J
R 21	RS1/16S0R0J	R 403	RS1/16S223J
R 103	RS1/16S103J		
R 104	RD1/4PU102J	R 404	RD1/4PU223J
		R 405	RS1/16S102J
R 105	RS1/16S102J	R 406	RD1/4PU102J
R 106	RS1/16S102J	R 407	RS1/16S101J
R 107	RS1/16S2R2J	R 408	RS1/16S101J
R 108	RS1/16S473J		
R 109	RS1/16S223J	R 409	RS1/16S101J
		R 410	RS1/16S101J
R 110	RS1/16S222J	R 411	RD1/4PU222J
R 111	RS1/16S152J	R 412	RS1/16S0R0J
R 112	RS1/16S223J	R 413	RD1/4PU222J
R 115	RD1/4PU102J		
R 116	RD1/4PU102J	R 415	RS1/16S821J
		R 416	RS1/16S821J
R 117	RD1/4PU471J	R 417	RS1/16S473J
R 118	RD1/4PU223J	R 418	RS1/16S473J
R 121	RS1/16S101J	R 419	RD1/4PU562J
R 122	RD1/4PU151J		
R 124	RS1/16S473J		

====Circuit Symbol and No.====Part Name	Part No.	====Circuit Symbol and No.====Part Name	Part No.
R 500	RS1/16S101J	C 112	CEAL221M10
R 501	RS1/16S221J	C 113	CKSRYB104K25
R 502	RS1/16S103J	C 116	CKSRYB103K50
R 503	RS1/16S152J	C 117	CKSRYB473K25
R 504	RD1/4PU223J	C 118	CKSRYB105K10
R 505	RD1/4PU103J	C 119	CKSRYB473K25
R 506	RS1/16S153J	C 120	CKSRYB472K50
R 700	RS1/16S0R0J	C 121	CKSRYB103K50
R 701	RS1/16S223J	C 122	CEAL100M16
R 702	RS1/16S472J	C 123	CEAL100M16
R 703	RS1/16S103J	C 124	CCSRCH101J50
R 704	RS1/16S223J	C 125	CKSRYB473K25
R 705	RS1/16S223J	C 126	CCSRCH101J50
R 706	RS1/16S102J	C 127	CCSRCH101J50
R 707	RS1/16S471J	C 128	CEAL220M16
R 709	RS1/16S104J	C 129	CCSRCH7R0D50
R 710	RS1/16S473J	C 130	CCSRCK2R0D50
R 716	RD1/4PU102J	C 131	CCSRCH7R0D50
R 717	RS1/16S472J	C 136	CKSRYB473K25
R 718	RS1/16S473J	C 137	CCSRCH471J50
R 719	RS1/16S223J	C 138	CCSRCH561J50
R 720	RS1/16S473J	C 140	CEAL470M10
R 721	RS1/16S473J	C 141	CKSRYB102K50
R 722	RD1/2PM102J	C 143	CEAL470M10
R 723	RS1/16S223J	C 144	CKSRYB104K25
R 724	RD1/2PM102J	C 145	CKSRYB473K25
R 801	RS1/16S222J	C 146	CKSRYB473K25
R 802	RD1/4PU222J	C 301	CCSRCH471J50
R 803	RD1/4PU222J	C 303	CKSRYB102K50
R 804	RS1/16S473J	C 304	CKSRYB102K50
R 805	RD1/4PU222J	C 305	CEAL101M10
R 806	RD1/4PU223J	C 306	CEAL101M10
R 807	RD1/4PU222J	C 307	CKSRYB103K50
		C 308	CKSRYB103K50
		C 309	CCSRCH101J50
CAPACITORS			
C 1	CEAL4R7M16	C 310	CCSRCH101J50
C 2	CKSRYB102K50	C 311	CEAL330M10
C 3	CKSRYB102K50	C 312	CEAL330M16
C 4	CEAL2R2M50	C 313	CKSRYB103K50
C 5	CKSRYB104K25	C 401	CKSRYB105K10
C 6	CCSRCH200J50	C 402	CKSRYB105K10
C 7	CCSRCH200J50	C 403	CKSRYB105K10
C 101	CKSRYB473K25	C 404	CKSRYB105K10
C 104	CKSRYB102K50	C 405	CKSRYB224K10
C 105	CKSRYB223K25	C 406	CKSRYB224K10
C 106	CKSRYB103K50	C 407	CKSRYB224K10
C 107	CKSRYB223K25	C 408	CKSRYB224K10
C 108	CKSRYB223K25	C 409	CKSRYB104K25
C 110	CKSRYB103K50	C 410	CEAL470M10
C 111	CKSRYB223K25	C 411	CEAL100M16

KEH-P1010, P1015

====Circuit Symbol and No.====Part Name	Part No.	====Circuit Symbol and No.====Part Name	Part No.
C 413	CKSRYB105K10	B Unit Number :CZW5520	
C 414	CKSRYB105K10	Unit Name :Keyboard Unit	
C 415	CKSRYB103K50		
C 416	CKSRYB103K50		
C 417	CKSRYB472K50		
C 418	CKSRYB472K50		
C 421	CEAL2R2M50		
C 422	CEAL2R2M50		
C 423	CKSRYB222K50		
C 424	CKSRYB222K50		
C 427	CKSRYB474K10		
C 428	CKSRYB474K10		
C 429	CKSRYB474K10		
C 430	CKSRYB474K10		
C 431	CKSRYB474K10		
C 432	CKSRYB474K10		
C 433	CKSRYB474K10		
C 434	CKSRYB474K10		
C 500	CKSRYB104K25		
C 501 3300 μ F/16V	CCH1018		
C 502	CKSRYB474K10		
C 503	CKSRYB474K10		
C 504	CKSRYB105K10		
C 505	CKSRYB105K10		
C 506	CKSRYB473K25		
C 508	CEAL100M16		
C 509	CEAL330M10		
C 511	CKSRYB224K10		
C 700	CEA471M16		
C 701	CKSRYB103K50		
C 703	CEAL470M10		
C 704	CEAL101M10		
C 705	CKSRYB103K50		
C 706	CEAL101M10		
C 709	CKSRYB102K50		
C 712	CEAL3RM50		
C 714	CEALR10M50		
C 715	CKSRYB473K25		
C 801	CCSRCH101J50		
C 803	CKSRYB473K25		
		MISCELLANEOUS	
		IC 900 IC	PD6340A
		D 900 Diode	DA204K
		L 900 Ferri-Inductor	LAU101K
		X 900 Ceramic Resonator 4.97MHz	CSS1422
		PL 901 Lamp 14V65mA	CZE2950
		PL 902 Lamp 14V65mA	CZE2950
		PL 903 Lamp 14V65mA	CZE2950
		RN 901	RAB4C473J
		RN 902	RAB4C473J
		LCD900 LCD	CZA5540
		RESISTORS	
		R 900	RS1/16S473J
		R 901	RS1/16S472J
		R 902	RS1/16S222J
		R 903	RS1/16S222J
		CAPACITORS	
		C 900	CKSRYB102K50
		C 901	CKSYF225Z16
		C 902	CKSRYB104K25
		C Unit Number :	
		Unit Name :Switch PCB	
		S 3 Slide Switch(FWD/REV)	1-0363-7002
		Miscellaneous Parts List	
		S 1 Switch(TAPE/TUN)	1-0363-7005
		S 2 Switch(Mute)	1-0363-7001
		M 1 Motor Assy	1-0363-7006
		HD 1 Head	X-0036-7123

CONTRAST TABLE of TUNER AMP UNIT

KEH-P1010/XM/UC and KEH-P1015/XM/ES have the same construction except for the following:

Symbol and Description	Part No.	
	KEH-P1010/XM/UC	KEH-P1015/XM/ES
R 18	Not used	RS1/16S473J
R 20	RDV4PU473J	Not used